

GNY ADDITIVE INJECTION CART

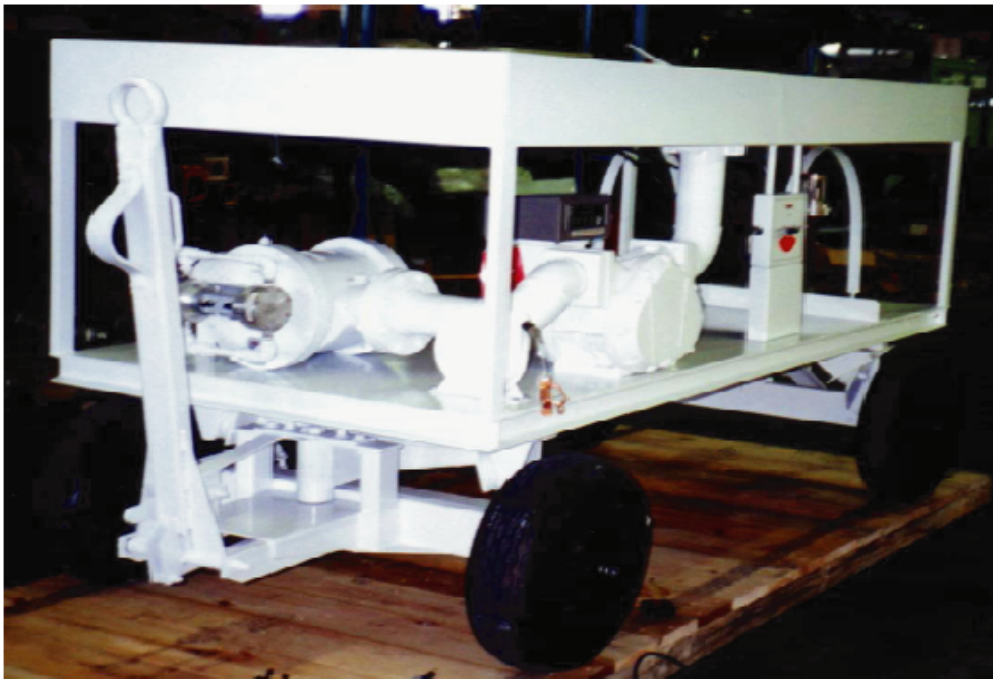
GNY MODEL # FB968

Specification:

Additive Injection Cart type 800 is a mechanically assembly designed to provide a means of injecting a metered amount of an additive into a base fuel.

The general configuration of the unit is a four (4) wheel steerable front axle cart with top deck and lunette eye towbar. Installed with the required components and piping for the fuel delivery / injection process. Features include the following:

Four (4) 6.90 x 9 pneumatic foam filled tires, tow bar parking brake, model 800 fluid motor using product flow to drive the injection pump, rated flow of 50 to 750 GPM with control panel, holder assembly for 55 gallon drum, desiccant dryer for vent and stainless steel wetted parts for storage drum suction connection, storage barrel hold down bands, flexible additive hose with quick disconnect fittings, international standard 3 lug bayonet flanged inlet adapter to mate to refueler single point underwing nozzle, 15 feet x 2.5" aircraft refueling hose with commercial single point underwing nozzle, static ground reel. Unit also equipped with a positive displacement meter, with large numeral counter, maximum flow rate of 350 GPM, anodized aluminum case, non-ferrous internals;



Unit completely assembled. All main product piping of welded aluminum. Entire unit finished with two (2) coats of white epoxy paint. The unit does not include optional additive storage tanks.

GNY EQUIPMENT, LLC

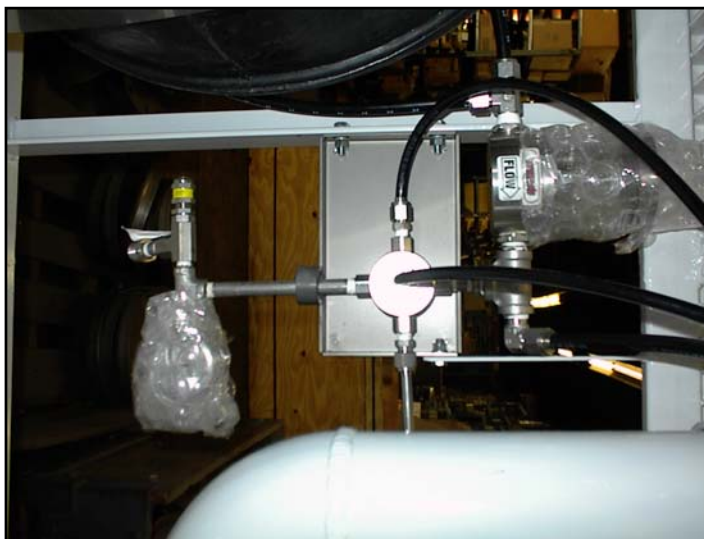
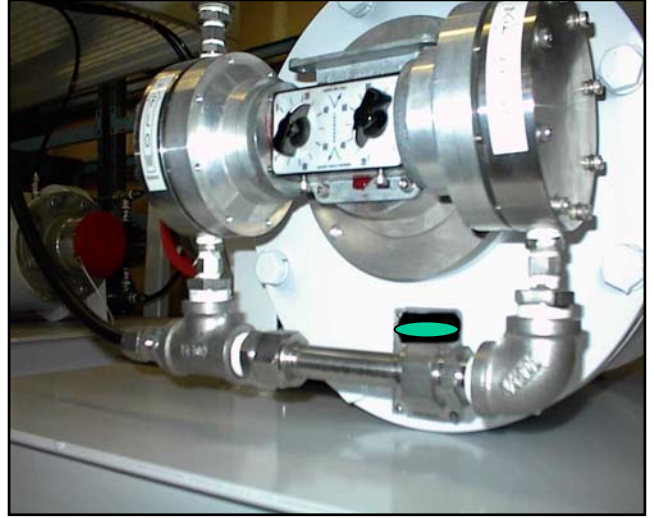
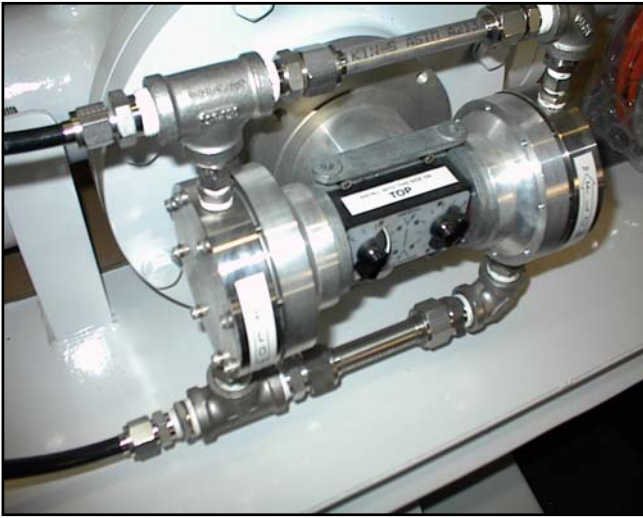
20 DREXEL DRIVE · BAY SHORE · NEW YORK 11706 · USA

Phone: (631) 273 4940 · FAX: (631) 273 5018

Email: gnyequip@gnyequipment.com

www.gnyequipment.com

GNY ADDITIVE INJECTION CARTS



4" Line