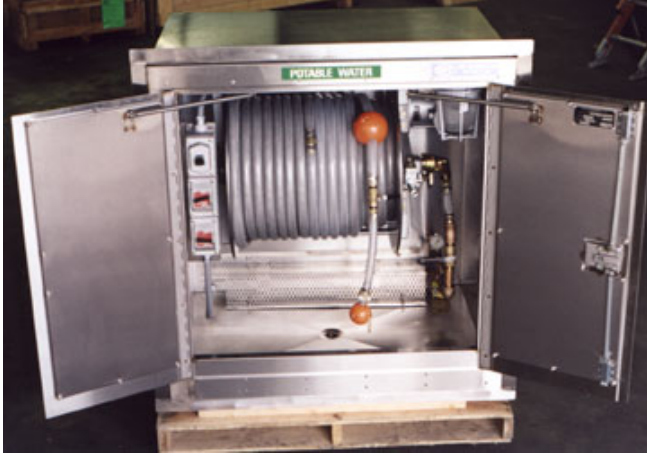


GNY Potable Water Cabinets

Model: 5292



These cabinets expedite dispensing of potable water direct to your aircraft at congested loading locations through a variety of mounting options including:

1. External terminal wall
2. Flush mount into wall
3. Pedestal of loading bridge
4. Free standing base

Standard Specifications:

Cabinet:

Stainless Steel, Type 304, 14 and 16 gage, double wall with polyboard insulation.

Doors:

Stainless Steel, 14 gage insulated double wall construction with two point latch handle. Full length stainless steel piano hinge.

Nozzle:

(See Table 1).

Piping:

1" brass.

Hose:

1" (See Table 2) Special PVC drinking water hose, meeting FDA, NSF. 51 and USDA requirements, tasteless, odorless and non-contaminating.

Hose Reel:

Hannay, 1" with bronze swing joint and bronze internal piping. Drum aluminum, discs are stainless steel. Frame is heavy duty steel painted alkyd enamel, light gray.

Shut-Off Valve:

1" brass ball with quarter turn handle.

Dual Check Valve/Backflow Preventer:

1" brass.

Pressure Regulator:

1" brass, adjustable 25 PSI to 75 PSI.

Gauge:

2" dia. 0-160 PSI, with brass or bronze internals.

Union:

1" brass, ground joint union.

Dimensions:

44.5"L x 31.5" W x 45" H.

Light:

100 watt, pendant type with guard, includes on-off switch.

Wiring:

All wiring is enclosed in Sealtite weatherproof flexible conduit.

Electrical Load Data:

Hose reel rewind motor-1/2 HP, single phase, 115/230 volts, 6.5 amps. Heater-1200 watts, 120 volt, single phase, 10amps. Light-100 watts, 120 volts, 1.0 amp.

Shipping Weight:

(Approx.) 700lbs.

Stand (optional):

18" high robust water cabinet stand (P/N CABW-STAND-18)

Epoxy coated plain steel or Stainless Steel Type 304.

Please specify material either type 304 Stainless Steel or Epoxy painted Carbon Steel.

Heater (optional):

1200 watt, 120V single phase. Stainless steel sheathed strip heater mounted on lower rear wall includes on-off switch and heater guard switch (60°F).

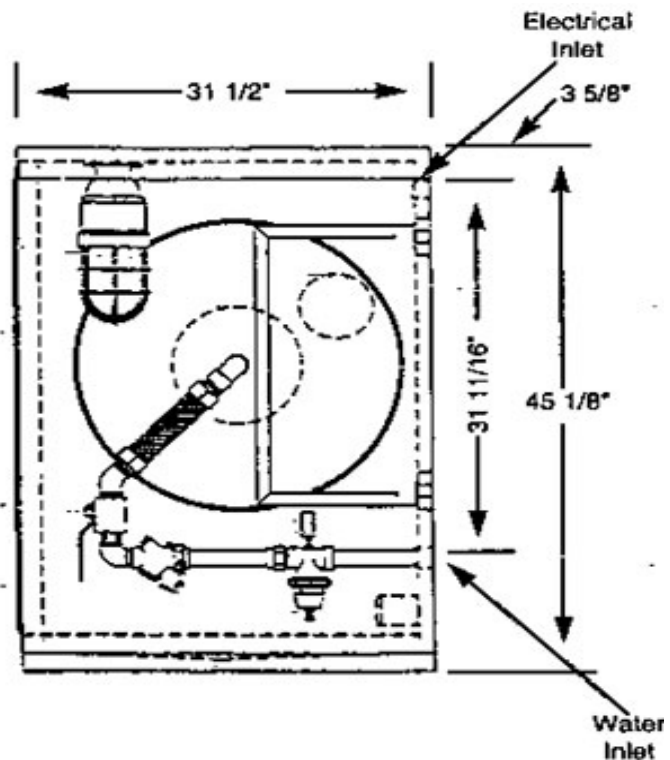
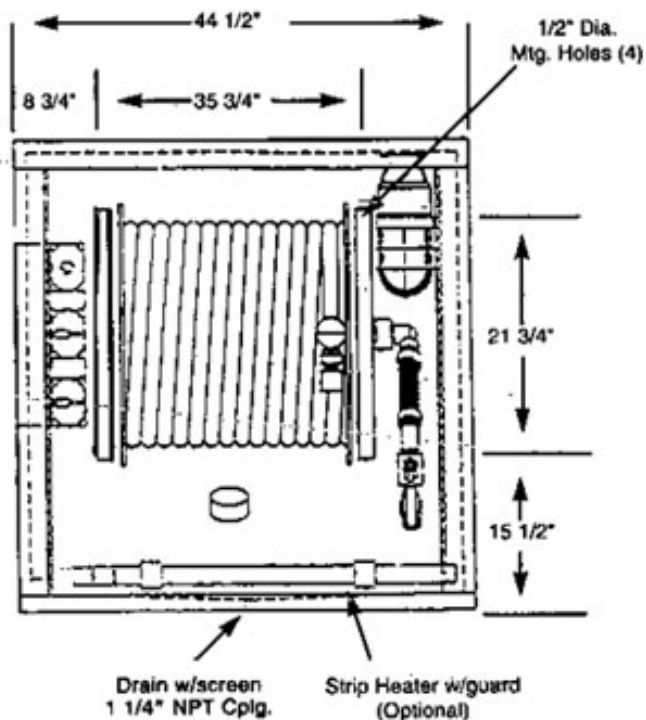


Table 1

First Dash Number	Hose Size	Nozzle
-1	3/4"	Supplied by Customer
-2	1"	Supplied by Customer
-3	3/4"	1041-BV Open Break with Ball Valve
-4	1"	1041-BV Open Break with Ball Valve

Table 2

Second Dash Number	Hose Length
-100	100'
-150	150'
-175	175'
-200	200'
-225	225'

Hose maybe supplied in combinations of 100, 75 & 50 Ft. lengths unless otherwise specified.

Ordering Instructions:

1. Hose size and nozzle. [See Table 1](#) (first suffix)
2. Hose Length. [See Table 2](#) (second suffix)
3. If heater required add suffix "H" (third suffix)

Example:

1" Hose with 3/4" nozzle 200' length of hose, standard pressure regulator with heater

Model: 5292-4-200-H

GNY EQUIPMENT, INC.

20 DREXEL DRIVE • BAY SHORE • NEW YORK 11706 • U.S.A.

Phone: (631) 273 4940 • **Fax:** (631) 273 5018

email: gnyequip@gnyequipment.com

www.gnyequipment.com

GNY Potable Water Cabinets

Model: 5292

