

GNY AIRCRAFT GROUND SERVICE PIT MODEL 1463WR

With Water Resistant Feature

FOR AIRPORT APRON AND HANGER MAINTENANCE FACILITIES

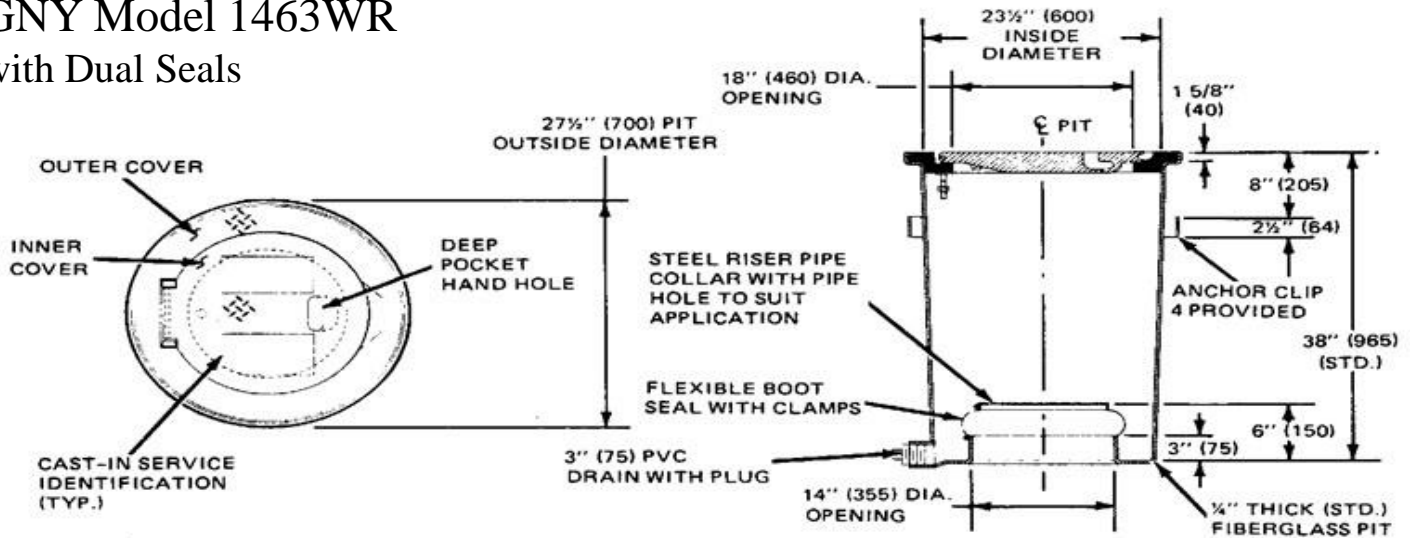


The standard Model 1463WR pit consists of a two piece cast aluminum cover assembly, Hinged-Block and a one piece molded fiberglass shell, dual seals (sealing outer-cover and inner-cover) having a bottom entrance, pipe collar, flexible fuel-resistant Buna-N boot type seal, and stainless steel clamps. Flexible Buna-N boot provides vertical and horizontal movement. Compliance with JIG Bulletin 90.

APPLICATIONS:

FUEL HYDRANT	For all commercial aviation fuel hydrant valves.
WATER SERVICE	For water hydrant outlets and/or water service.
HIGH POINT VENT	For piping systems venting connections (fuel, water and air).
LOW POINT VENT	For piping systems low point drain connections (fuel, water and air).
COMBINATION VENT/DRAIN	For combination high point vent and low point drain connections.
ELECTRICAL	For 120 volt and 240 volt, 60 hertz and 400 hertz service and other various voltages and frequencies. Special application for communication service.
AIR START	For air starts hose, coupler, and coupler holder.
PRECONDITIONED AIR OUTLET	For conditioned air hose and adapter storage.
SURGE SUPPRESSOR	For installation of 5 and 7-1/2 gallon surge suppressors.
SUMP	For low point collection of fluids.
MAINTENANCE AND ACCESS	For access manways into underground vaults.
SPECIAL APPLICATIONS	Consult factory for custom application.

GNY Model 1463WR with Dual Seals



SHELL: The Model 1463WR pit shell is a one piece molded unit. The inside dimensions of the shell are 23.5 inches (600mm) in diameter by 38 inches (965mm) deep. The shell wall is nominally one-quarter (.25) inch (6.4mm) thick and has four (4) integral brackets for concrete anchors equally spaced around the outside circumference of the shell below the cover seat. The pit shell is a glass fiber reinforced plastic (GRP) structure composed of 30 percent glass fiber and 70 percent polyester resin. The glass fiber is high quality, commercial grade. The polyester resin is a premium grade, corrosion resistant isophthalic type resistant to soil borne chemicals as well as aircraft fuels, hydraulic oils, and deicing solutions. The shell interior is coated with resin-rich gel coat having a white pigment to provide a bright, clean environment and appearance. Fluids collected in the pit may be drained through a 3 inch IPS rigid PVC pipe coupling installed in the shell's sump for connection to a suitable collection system.

COVER: The pit cover is a two piece, non-skid, non-sparking, assembly consisting of one stationary outer ring, and an inner access cover with hinged-block. The inner cover can be opened a full 180 degrees with a 25 Lb. (11.4kg) single hand lift on a non-weight-bearing hinge, to expose an 18 inch (460mm) diameter clear opening. Each inner cover is available with cast in service identification (one inch (25mm) high by .062 inch (1.5mm) raised letters), a deep pocket hand-hole, and an edge finger-grip. The cover assembly is completely removable for maximum access to internal equipment. Each cover is manufactured from an aluminum-zinc alloy casting conforming to Federal Specification (USA) QQ-A-601F alloy 712.0 (formerly 40E). This alloy provides high strength, excellent machinability and ductility, very good shock and corrosion resistance, and uniform material properties throughout the casting.

LOADING RATING: The cover assembly (part numbers 6533774 and 6533772(H) is guarantee to withstand a single 200,000 pound (90720 kg) load applied over a 200 square inch (1290cm²) tire footprint area placed anywhere on it (1000psi (70.3kg/cm²) rating). This represents a 4 to 1 safety factor.

QUALITY ASSURANCE: All covers are proof loads tested and evaluated in accordance with the United States Military Standard MIL-STD-105, "Sampling Procedures and Tables for Inspection Attributes".

OPTIONS:

FLANGED STEEL SUPPORT

FRAME FOR COVER

OVER-ALL-DEPTH

Integrally bonded to the fiberglass shell.

Presently available optional depths 18, 30, 52, 60, and 72 inches (460, 760, 1320, 1525, and 1830mm). Other depths are available on special order.

CUSTOM SHELL

CONFIGURATIONS

SHELL THICKNESS

SHELL PENETRATIONS

Side entrance or extensions available on special order.

3/8 inch (9.5mm) thick shells are available.

Liquid tight penetrations through shell walls or floor are available for piping, electrical Conduit, etc.

SPLIT TOP SHELL

A special slip-fit, removable top section is available to enable a continuous concrete apron Panel pour. The removable upper section is supplied with four (4) additional integral brackets for Concrete anchors. Glass fiber reinforced plastic "mud covers" are available to prevent concrete from entering. The pit during the continuous concrete pours.

SHELL BOTTOM

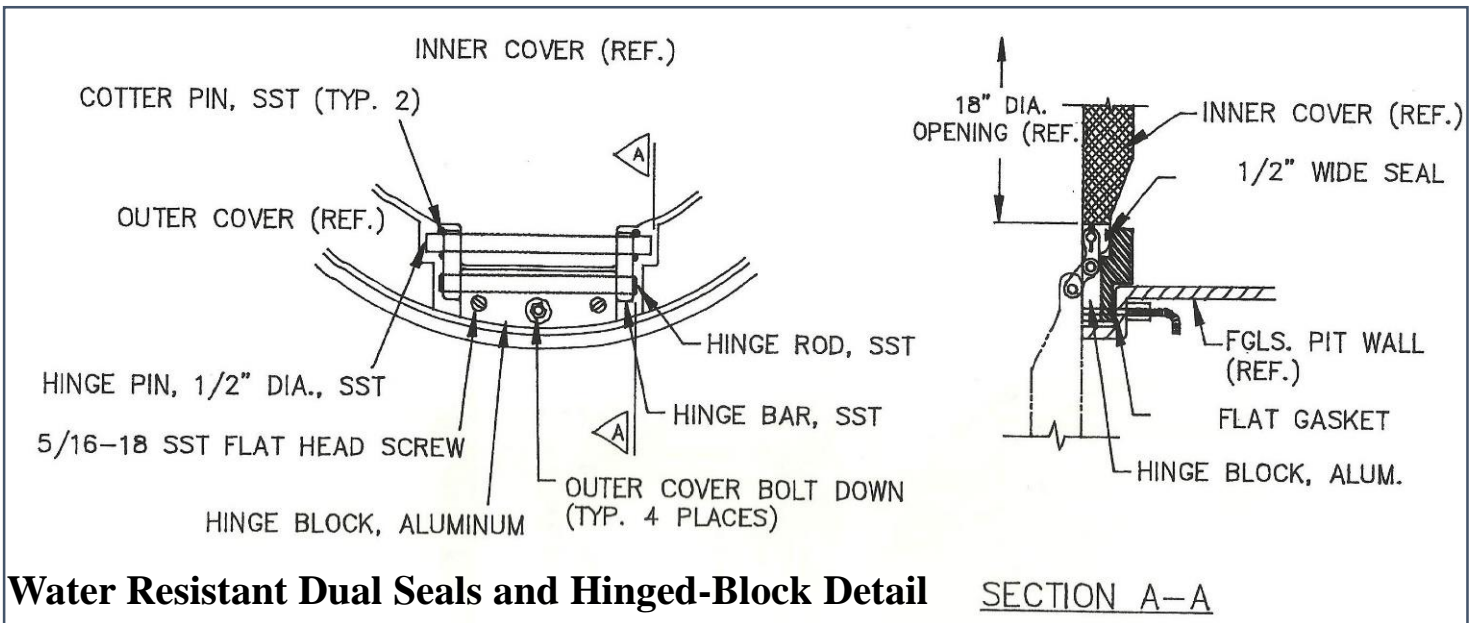
INNER COVER SEAL

A solid, liquid tight, flat bottom is available.

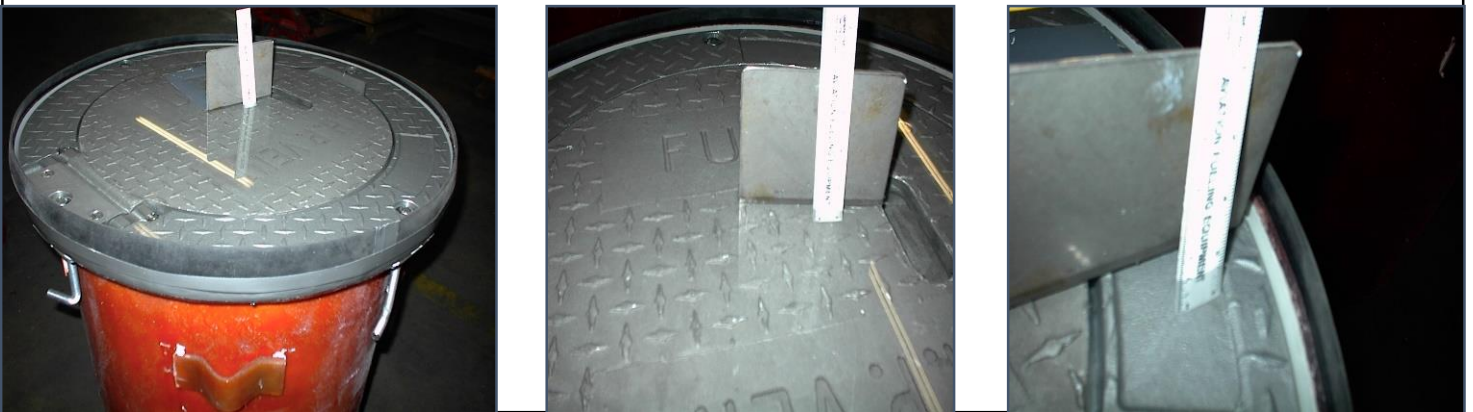
Fuel resistant "O" ring seal installed in a machined groove.

GNY AIRCRAFT GROUND SERVICE PIT MODEL 1463WR

Special Features:



Testing: Model 1463WR- Water Resistant Assy. Under Water Test: 2" of water on Top Cover for 30 minutes



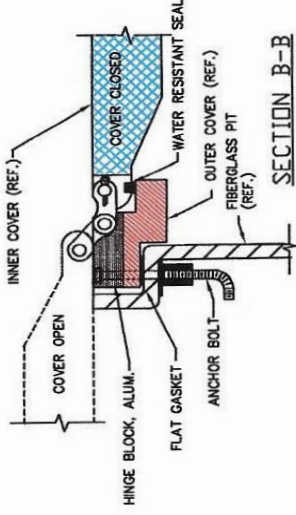
Testing: GNY Model 1463WR - Under Proof Load Test:



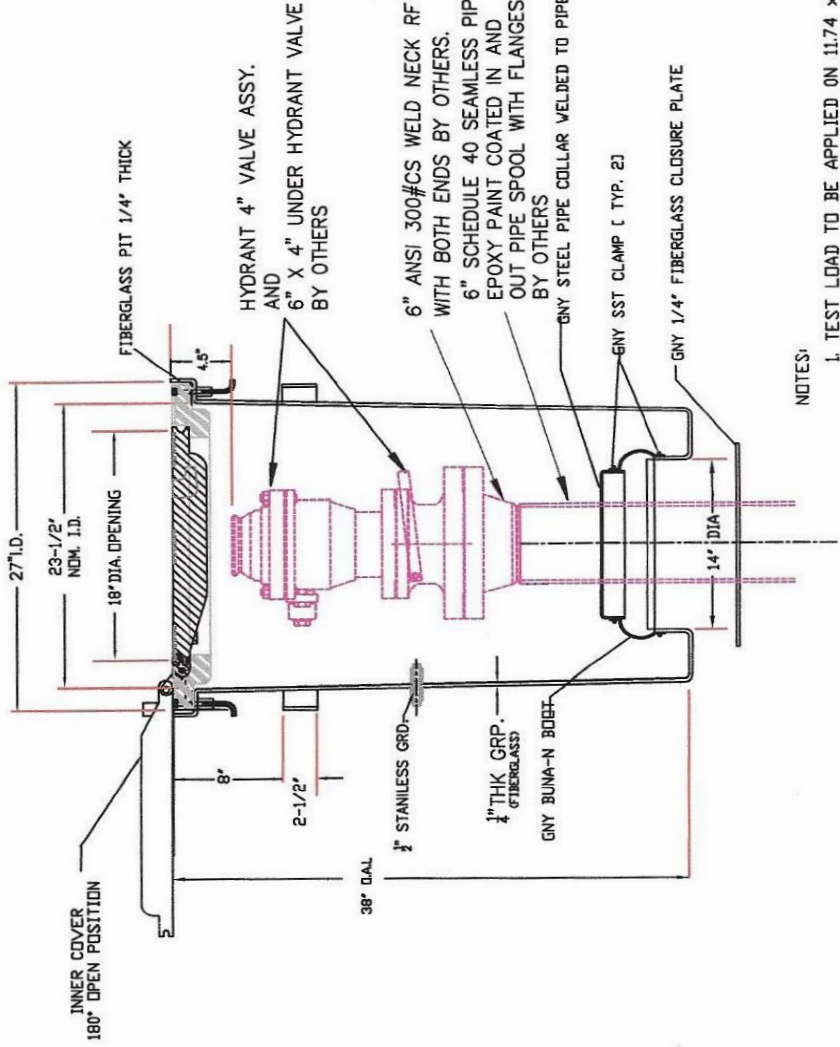
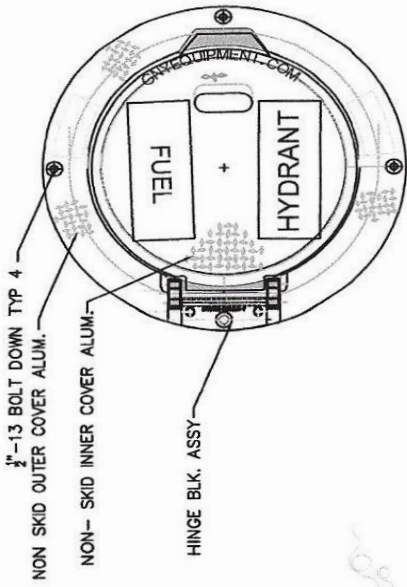
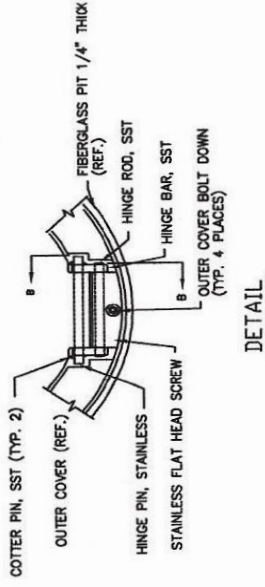
The cover assembly (part numbers 6533774 and 6533772(H)) is under load test guarantee to withstand a single 200,000 pound (90720 kg) load applied over a 200 square inch (1290cm²) tire footprint area placed anywhere on it (1000psi (70.3kg/cm²) rating). **This represents a 4 to 1 safety factor.**



SECTIONAL VIEW



SECTION B-B



NOTES:

1. TEST LOAD TO BE APPLIED ON 11.74 x 18.6 TIRE PRINT AREA = 200 SQ. IN.
2. RATED LOAD = 250 P.S.I.
3. PROOF LOAD = 500 P.S.I.
4. ULTIMATE LOAD = 1000 P.S.I.
5. STATISTICAL TEST PER MIL-105

NOTES:

1. ALL COVERS WITH NON-SKID SURFACE.
2. ALL COVERS 712 CAST ALUMINUM CONFIRMING TO 00-A-601F.

TITLE
GNYMODEL 1463-WR38
BOLT DOWN WATER RESISTANT
HYDRANT VALVE PIT

DRAWN BY J S DATE 7-5-19
 CHECKED BY DATE
 APPROVED BY DATE

GNY EQUIPMENT, INC
 20 Drexel Drive
 Bay Shore, New York 11706
 Telephone: (516) 271-4940 Fax: (516) 271-5018
 E-mail: gnyequip@gnyequipment.com

SCALE: 1:1
 DWG. # GNYM1463WR38-HYDRANT
 REV. 1