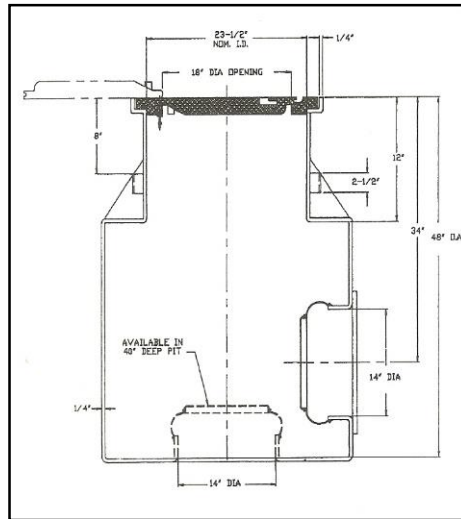


GNY AIRCRAFT GROUND SERVICE PIT MODEL 1480WR

With Water Resistant Feature

FOR AIRPORT APRON AND HANGER MAINTENANCE FACILITIES



The standard Model 1480WR pit consists of a two piece cast aluminum cover assembly with hinged block and a one piece molded fiberglass shell, dual seals (sealing outer-cover and inner-cover), bolt-down with four studs, having a bottom entrance or side entrance, pipe collar, flexible fuel-resistant Buna-N boot type seal, and stainless steel clamps. Flexible Buna-N boot provides vertical and horizontal movement. Compliance to JIG Bulletin 90.

APPLICATIONS:

FUEL HYDRANT

For all commercial aviation fuel hydrant valves.

WATER SERVICE

For water hydrant outlets and/or water service.

HIGH POINT VENT

For piping systems venting connections (fuel, water and air).

LOW POINT DRAIN

For piping systems low point drain connections (fuel, water)

COMBINATION VENT/DRAIN

For combination high point vent and low point drain connections.

ELECTRICAL

For 120 volt and 240 volt, 60 hertz and 400 hertz service and other various voltages and frequencies.

Special application for communication service.

AIR START

For air starts hose, coupler, and coupler holder.

PRECONDITIONED AIR OUTLET

For conditioned air hose and adapter storage.

SURGE SUPPRESSOR

For installation of 5 and 7-1/2 gallon surge suppressors.

SUMP

For low point collection of fluids.

MAINTENANCE AND ACCESS

For access manways into underground vaults.

SPECIAL APPLICATIONS

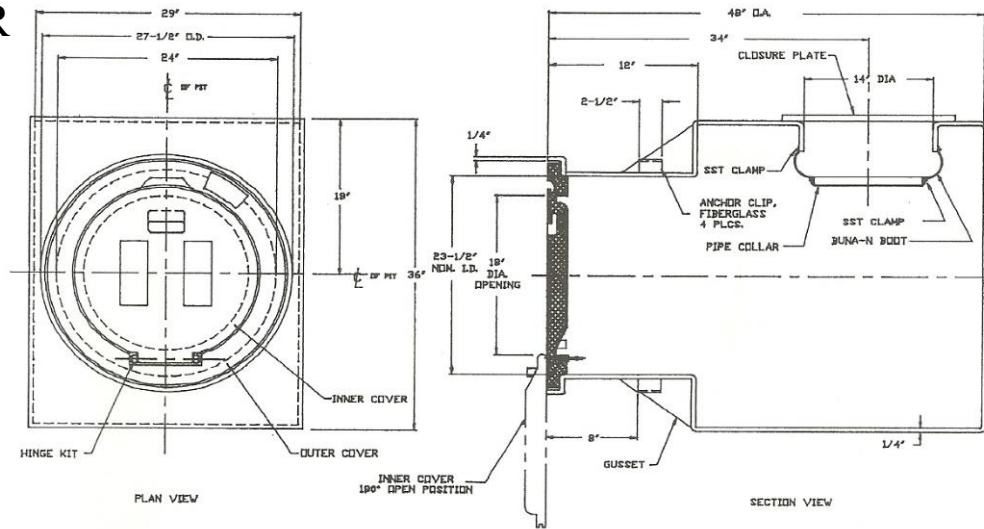
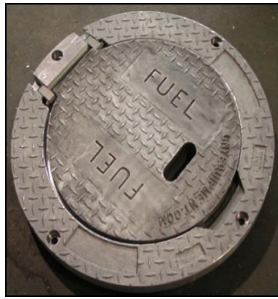
Consult factory for custom application.

www.gnyequipment.com

Nov. 2019

Page 22 of GSP 2000 Booklet

GNV Model 1480WR with Dual Seals



SHELL:

The Model 1480WR pit shell is a one piece molded unit. The inside dimensions of the shell are 23.5 inches (600mm) in diameter (965mm) deep. The shell wall is nominally 3/8 inch (9.5mm) thick and has four (4) integral brackets for concrete anchors equally spaced around the outside circumference of the shell below the cover seat. The pit shell is a glass fiber reinforced plastic (GRP) structure composed of 30 percent glass fiber and 70 percent polyester resin. The glass fiber is high quality, commercial grade. The polyester resin is a premium grade, corrosion resistant isophthalic type resistant to soil borne chemicals as well as aircraft fuels, hydraulic oils, and deicing solutions. The shell interior is coated with resin-rich gel coat having a white pigment to provide a bright, clean environment and appearance. Fluids collected in the pit may be drained through a 3 inch IPS rigid PVC pipe coupling installed in the shell's sump for connection to a suitable collection system.

COVER:

The pit cover is a two piece, non-skid, non-sparking, assembly consisting of one stationary outer ring, an inner access cover with hinged block. Outer-ring is bolt-down with four studs. The inner cover can be opened a full 180 degrees with a 25 Lb. (11.4kg) single hand lift on a non-weight-bearing hinge, to expose an 18 inch (460mm) diameter clear opening. Each inner cover is available with cast in service identification (one inch (25mm) high by .062 inch (1.5mm) raised letters), a deep pocket hand-hole, and an edge finger-grip. The cover assembly is completely removable for maximum access to internal equipment. Each cover is manufactured from an aluminum-zinc alloy casting conforming to Federal Specification (USA) QQ-A-601F alloy 712.0 (formerly 40E). This alloy provides high strength, excellent machinability and ductility, very good shock and corrosion resistance, and uniform material properties throughout the casting.

LOADING RATING: The cover assembly (part numbers 6533774 and 6533772(H) is guarantee to withstand a single 200,000 pound (90720 kg) load applied over a 200 square inch (1290cm²) tire footprint area placed anywhere on it (1000psi (70.3kg/cm²) rating). This represents a 4 to 1 safety factor.

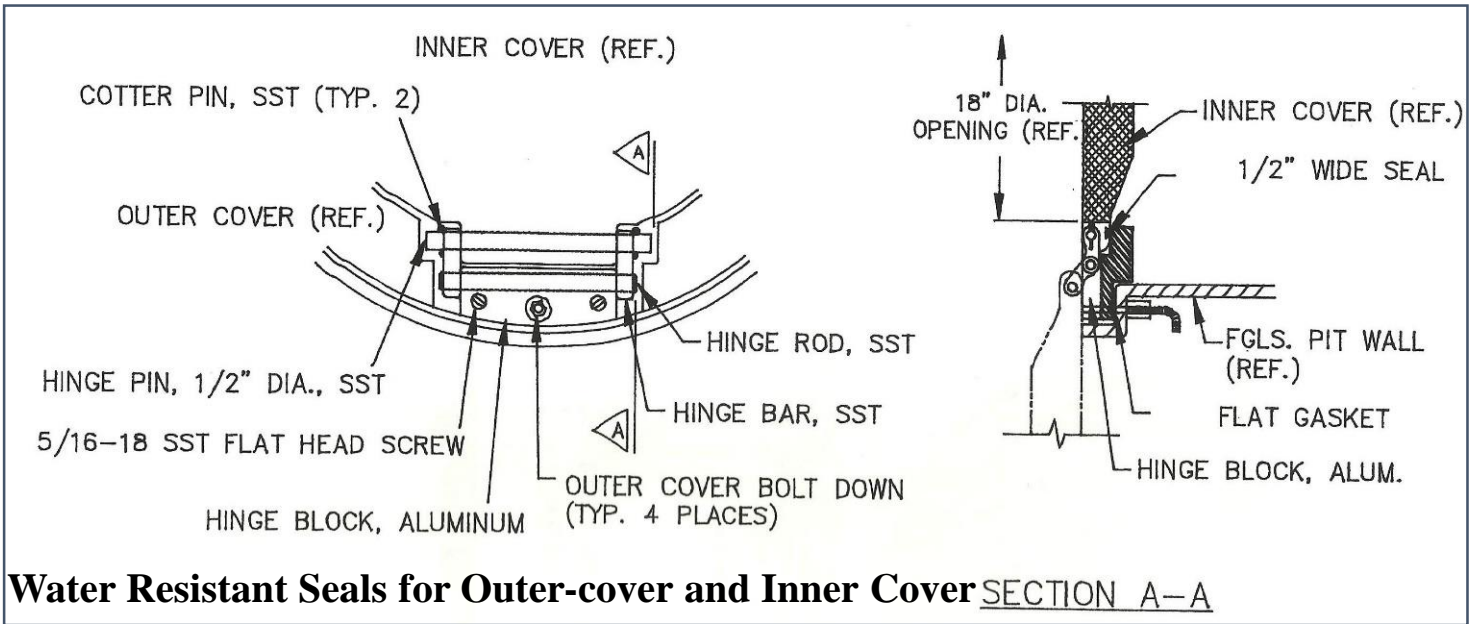
QUALITY ASSURANCE: All covers are proof loads tested and evaluated in accordance with the United States Military Standard MIL-STD-105, "Sampling Procedures and Tables for Inspection Attributes".

OPTIONS:

- OVER-ALL-DEPTH Standard depth is 48 inches (1220 mm)
- SHELL THICKNESS 3/8 inch (9.5mm) thick shells are available.
- SHELL PENETRATIONS Liquid tight penetrations through shell walls or floor are available for piping, electrical Conduit, etc.
- SPLIT TOP SHELL A special slip-fit, removable top section is available to enable a continuous concrete apron Panel pour. The removable upper section is supplied with four (4) additional integral brackets for Concrete anchors. Glass fiber reinforced plastic "mud covers" are available to prevent concrete from entering the pit during the continuous concrete pours.
- SHELL BOTTOM A solid, liquid tight, flat bottom is available.
- INNER COVER SEAL Fuel resistant "O" ring seal installed in a machined groove.

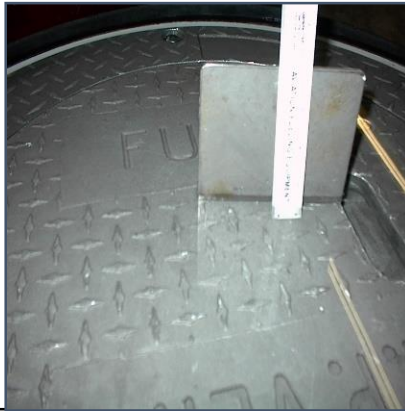
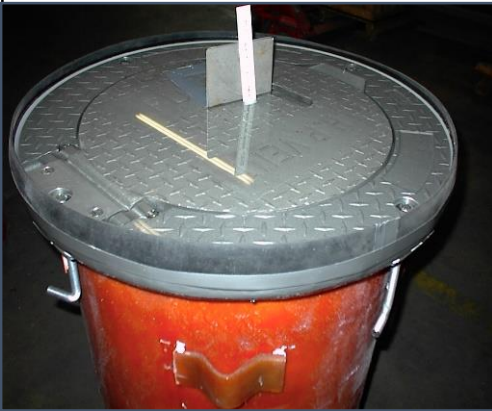
GNY AIRCRAFT GROUND SERVICE PIT MODEL 1480WR

Special Features:



Testing Water Resistant Feature

2" of water on Top Cover for 30 minutes



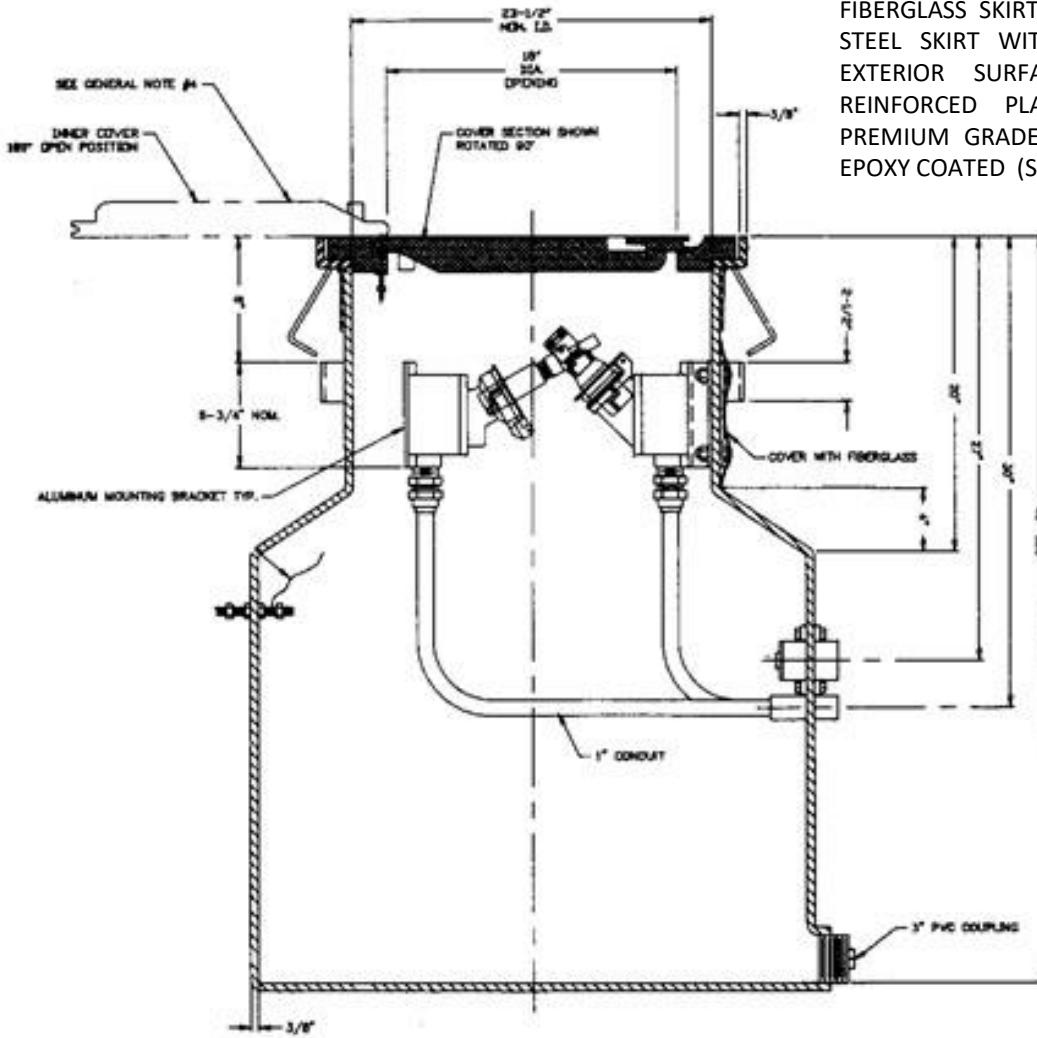
Testing: GNY Model 1480WR - Under Proof Load Test:



The cover assembly (part numbers 6533774 and 6533772(H)) is under load test guarantee to withstand a single 200,000 pound (90720 kg) load applied over a 200 square inch (1290cm²) tire footprint area placed anywhere on it (1000psi (70.3kg/cm²) rating). **This represents a 4 to 1 safety factor.**



FIBERGLASS SKIRT SHALL BE INTEGRALLY BONDED TO THE STEEL SKIRT WITH A STRUCTURAL ADHESIVE AND THE EXTERIOR SURFACE LAMINATED WITH GLASS FIBER REINFORCED PLASTIC (GRIP) AND POLYESTER RESIN, PREMIUM GRADE ALL OTHER EXPOSED SURFACES TO BE EPOXY COATED (SEE GENERAL NOTE #1)



SECTION VIEW

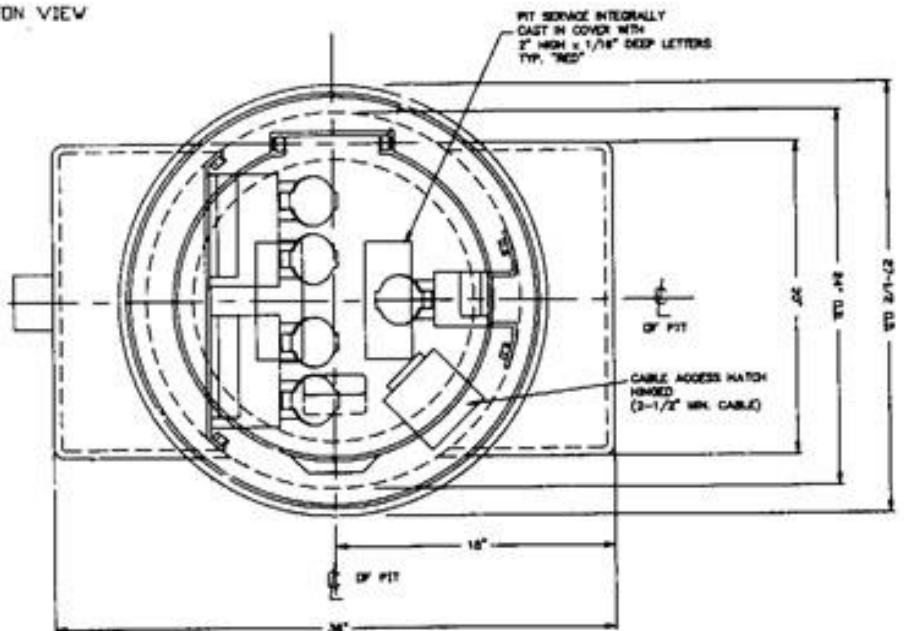


GENERAL NOTES:

1. ALL COVERS W/NOH-BRO SURFACE.
2. ALL COVERS 712 CAST ALUM. CONFORMING TO QD-A-8017.
3. VAPOR PHASE CORROSION INHIBITOR DEVICES INSTALLED IN ALL RECEPTACLE HOUSINGS.
4. UNDERSIDE OF COVER TO BE PAINTED SAFETY ORANGE.

NOTES:

1. TEST LOAD TO BE APPLIED ON EL74 = 18A
2. WIRE FRONT AREA = 200 SQ. IN.
3. RATED LOAD = 200 P.S.I.
4. TEST LOAD = 3000 P.S.I. (480)
5. STATISTICAL TEST PER MIL-105



PLAN VIEW

MODEL 1480

Title: FIBERGLASS ELECTRICAL SERVICE PIT

Nov. 2019