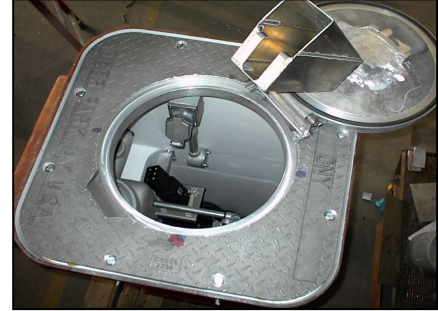


AIRCRAFT GROUND SERVICE PIT

MODEL 6200

FOR AIRPORT APRON AND HANGER MAINTENANCE FACILITIES



The standard Model 6200 pit consists of a two-piece cast aluminum cover assembly and one-piece molded fiberglass shell, having a bottom entrance, pipe collar flexible fuel-resistant boot-type seal and stainless steel clamps.

- 23" dia. inside opening
- 18" dia. cover opening
- Standard depth 40"
- Water Resistant

APPLICATIONS:

MAINTENANCE AND ACCESS

FUEL HYDRANT

HIGH POINT VENT

LOW POINT VENT

COMBINATION VENT/DRAIN

SUMP

WATER SERVICE

ELECTRICAL (400Hz & 60Hz
shown above)

PRECONDITIONED AIR OUTLET

AIR START

SURGE SUPPRESSOR

TELESCOPIC AREA LIGHT

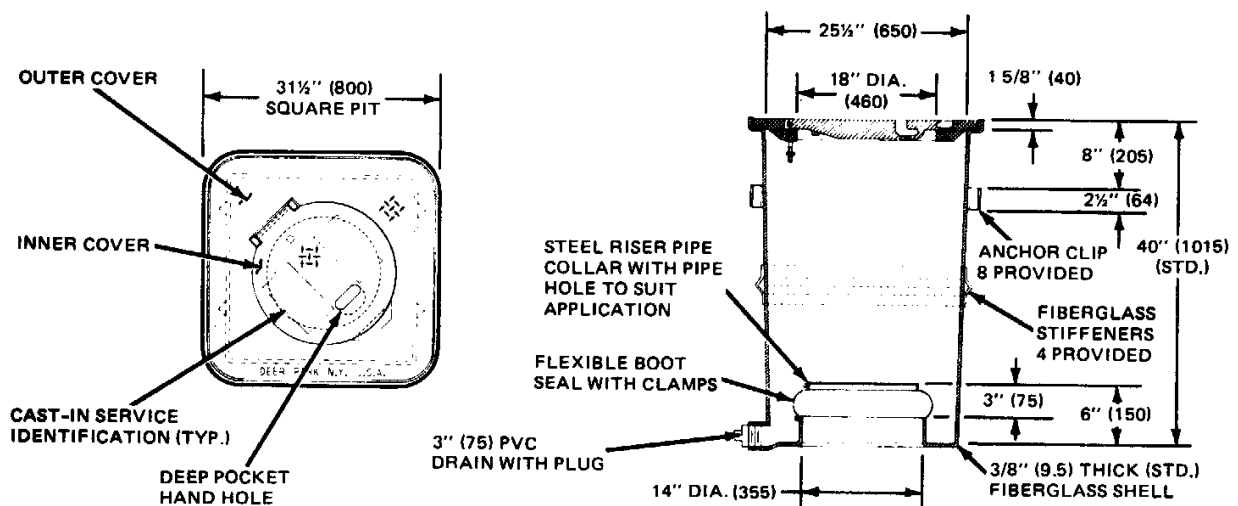
SPECIAL APPLICATIONS

PIT SHELL:

The Model 6200 pit shell is a one-piece molded GRP unit composed of 30% high quality glass fiber & 70% polyester resin that is corrosion resistant isophthalic type resistant to soil-borne chemicals as well as aircraft fuels, hydraulic oils and deicing solutions. The shell wall is nominally three-eighths (0.375) inches (9.5mm) thick and has 8 integral brackets for concrete anchors equally spaced around the outside perimeter of the shell below the cover seat. The inside dimensions of the shell are 25.5 inches (650 mm) square by 40 inches (1015 mm) deep. The shell interior is coated with a resin-rich gel coat having a white pigment to provide a bright clean environment and appearance.

Special depths other than the standard 40" are available.

www.gnyequipment.com



COVER:

The Model 6200 pit cover is a two piece, non-skid, non-sparking assembly consisting of one stationary outer ring and an inner access cover. The inner cover can be opened a full 180 degrees with a 25lb (11.4 Kg) single hand lift on a non-weight bearing hinge. When open, an 18 inch (460 mm) diameter opening is exposed. Each cover is manufactured from a high strength aluminum-zinc alloy and is available with cast-in service identification (one inch (25mm) high by 0.062 inch (1.5mm) raised letters), a deep pocket handhole and an edge finger-grip. The cover assembly is completely removable for maximum access to the internal equipment. Covers conform to Federal Specification QQ-A-601F alloy 712.0 (formerly 40E), and are high-strength, highly machinable, ductile, shock- and corrosion-resistant and uniform in material properties throughout the casting.

LOAD TESTING AND QUALITY ASSURANCE:

Each cover is guaranteed to withstand a dual 200,000 lb (90720 Kg) load applied over 200 square inches (1290 cm²) tire footprint areas placed anywhere on the cover (1000 psi (70.3 Kg/cm²) rating). This represents a 4:1 safety factor. All covers are proof load [tested](#) and evaluated in accordance with the United States Military Standard MIL-STD-105 "Sampling Procedures and Tables for Inspection Attributes".

AVAILABLE DEPTHS:

52, 72 and 144 inches (1320, 1830 and 3658 mm).

Other depths available on special order.

OPTIONS:

Side extensions available on special order.

Liquid tight penetrations (electrical conduit, piping, etc.) through shell wall and base are available.

Split top shell to enable continuous concrete apron panel pour.

A solid, liquid tight, flat base is available.

Collection Sump for use with a drain trough.

Water-resistant feature available (fuel-resistant O-ring seal installed in a machined groove on the inner cover).



**GNY GROUND SERVICE PIT
MODEL NO. 6200-WR
ELECTRIC PIT: 400 Hz. and 60Hz.
(For Lufthansa Cargo)**

**GNY GROUND SERVICE PIT
(MODEL NO. 6200-WR)
ELECTRIC PIT: 400 Hz. and 60Hz.
(For Lufthansa Cargo)**



**GNY GROUND SERVICE PIT
(MODEL NO. 6200-WR)
ELECTRIC PIT: 400 Hz. and 60Hz.
(For Lufthansa Cargo)**

