

GNY AIRCRAFT GROUND SERVICE PIT MODEL 7038WR

FOR AIRPORT APRON AND HANGER MAINTENANCE FACILITIES



The standard Model 7038WR pit consists of a single-piece cast aluminum cover assembly and a one-piece molded fiberglass shell. The standard pit is supplied with open-bottom shell for access manway into underground vaults. The main cover is hinged, water resistant and dual gas spring balance (with optional mechanical counterweighted Model 7038) for ease of opening to expose a large square 38inch (965mm x 965mm) opening. Optional Fiberglass shell available with galvanized steel frame molded in a one piece design.

APPLICATIONS:

FUEL HYDRANT	For all commercial and military aviation fuel hydrant valves, single or dual configuration.
ISOLATION	For pipeline isolation valves.
ELECTRICAL	For 120 volt and 240 volt, 60 hertz and 400 hertz service and other various voltages and frequencies without transformers.
SURGE SUPPRESSOR	For installation of surge suppressors.
MAINTENANCE ACCESS	For access manways into underground vaults.

SHELL: The Model 7038 pit shell is a one-piece molded unit. The inside square dimension of the main body is 38 inches (965mm x 965mm) by depth dictated by concrete vault design (typically the depth is equal to the concrete vault's ceiling thickness). The shell wall is nominally ½ inch (13mm) thick and has eight (8) integral brackets for concrete anchors equally spaced around the outside of the shell below the cover seat. The pit shell is a glass fiber reinforced plastic (GRP) structure composed of 30 percent glass fiber and 70 percent polyester resin. The glass fiber is high quality, commercial grade. The polyester resin is a premium grade, corrosion resistant isophthallic type resistant to soil borne chemicals as well as aircraft fuels, hydraulic oils, and deicing solutions. The shell interior is coated with resin-rich gel coat having a white pigment to provide a bright, clean environment and appearance.

GNY PIT MODEL 7038WR

COVER:

For Model 7038WR: The pit cover is a single-piece, non-skid, non-sparking assembly consisting of a large hinge-main cover which can open to 90 degrees on weight bearing hinges. The main cover can be unlatched and opened with a single hand lift to expose a square 38inch (965mm x 965mm) clear opening. The unique gas spring mechanism, which leaves the main body clear for service equipment located near the underside of the main cover. Each main cover is available with cast service identification in recessed lettering 2 inches (51mm) high by 1/16 inch (2mm) deep. The cover assembly is completely removable for maximum access to internal equipment. Each cover is manufactured from aluminum alloy provides high strength, excellent machinability, and ductility, very good shock and corrosion resistance, and uniform material properties throughout the casting.

For Model 7038: The pit cover is a two-piece, non-skid, non-sparking assembly consisting of a small stationary “hinge” cover and a large counterweighted main cover which can open to 90 degrees on weight bearing hinges. The main cover can be unlatched and opened with a single hand lift to expose a square 38inch (965mm x 965mm) clear opening.

LOADING RATING: The cover assembly is guarantee to withstand a single 200,000 pound (90720 kg) load applied over a 200 square inch (1290cm²) tire footprint area placed anywhere on it (1000psi (70.3kg/cm²) rating). This represents a 4 to 1 safety factor.

QUALITY ASSURANCE: All covers are proof loads tested and evaluated in accordance with the United States Military Standard MIL-STD-105, “Sampling Procedures and Tables for Inspection Attributes”.

OPTIONS:

FLANGED STEEL SUPPORT

FRAME FOR COVER

OVER-ALL-DEPTH

CUSTOM SHELL

CONFIGURATIONS

SHELL PENETRATIONS

Integrally Flanged Steel Frame bonded to the fiberglass shell.

Presently available optional depths 20” or 24”. Other depths are available.

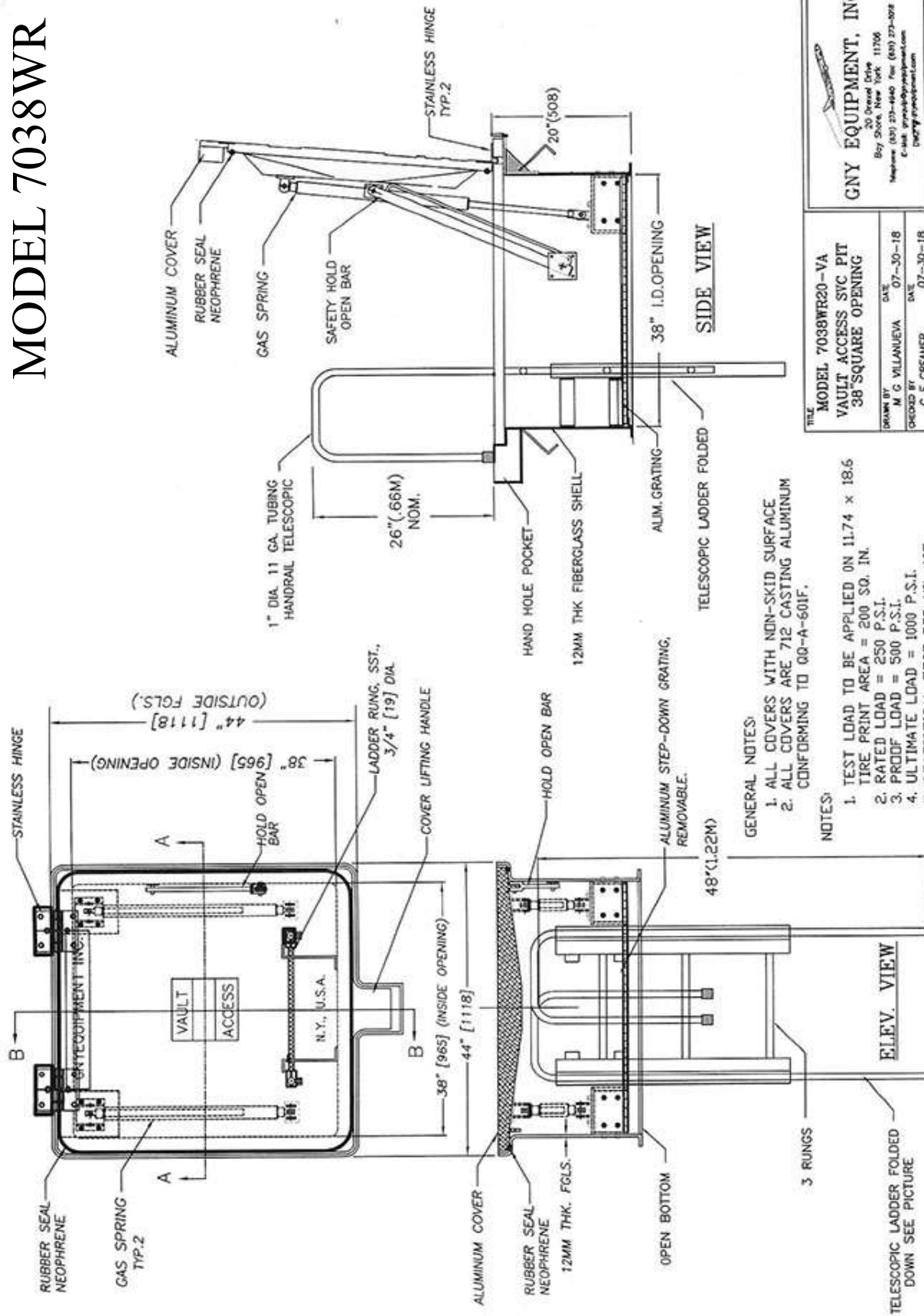
Side extensions available on special order.

Liquid tight penetrations through shell walls or floor are available for piping, electrical conduit, etc.



Installation at Airport

MODEL 7038WR



- GENERAL NOTES:**
1. ALL COVERS WITH NON-SKID SURFACE
 2. ALL COVERS ARE 712 CASTING ALUMINUM CONFORMING TO 60-A-60IF.
- NOTES:**
1. TEST LOAD TO BE APPLIED ON 11.74 x 18.6 TIRE PRINT AREA = 200 SQ. IN.
 2. RATED LOAD = 250 P.S.I.
 3. PROOF LOAD = 500 P.S.I.
 4. ULTIMATE LOAD = 1000 P.S.I.
 5. STATISTICAL TEST PER MIL-105

FILE
MODEL 7038WR20-VA
VAULT ACCESS SVC PIT
38" SQUARE OPENING

DRAWN BY
M. G. VILLANUEVA

CHECKED BY
C. F. CREAMER

DATE
07-30-18

SCALE
07-30-18

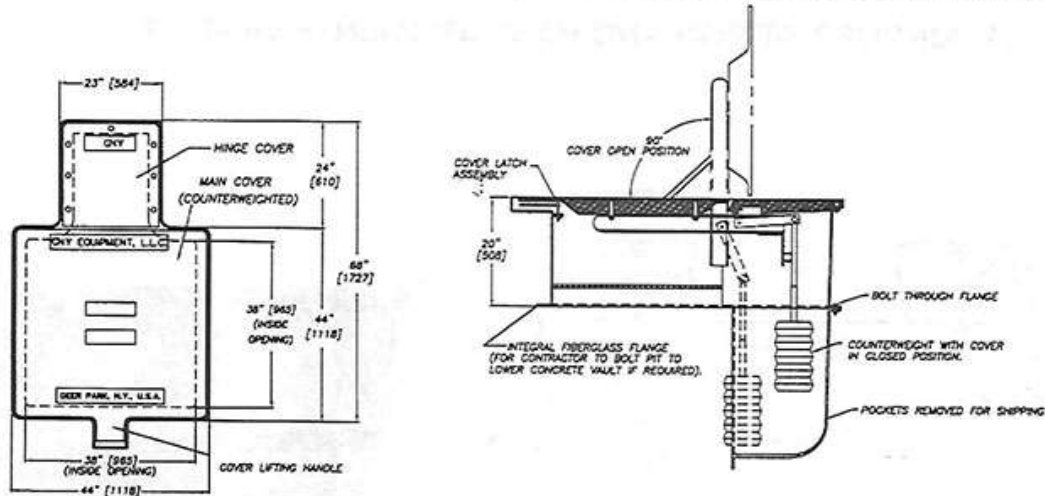
PROJECT
LIDUP - NEW ZEALAND

REV.
1 OF 1 GNY7038WR20-VA

GNY EQUIPMENT, INC.
20 Grand Drive 11706
Bay Shore, New York
Telephone (801) 273-6640 Fax (801) 273-6978
E-Mail gny@gnyequipment.com

AIRCRAFT GROUND SERVICE PIT MODEL 7038

FOR AIRPORT APRON AND HANGAR MAINTENANCE FACILITIES



The Model 7038 pit consists of a two-piece cast aluminum cover assembly and a one-piece molded fiberglass shell. The standard pit is supplied with open-bottom shell for access manway into underground vaults. The main cover is hinged and counterweighted for ease of opening to expose a large square 38 inch opening.

SHELL:

The Model 7038 pit shell is a one-piece molded unit. The inside square dimension of the main body is 38 inches (965mm) by depth dictated by concrete vault design (typically the depth is equal to the concrete vault's ceiling thickness). The shell wall is nominally 1/2 inch (13mm) thick and has eight (8) integral brackets for concrete anchors equally spaced around the outside of the shell below the cover seat. The pit shell is a glass fiber reinforced plastic (GRP) structure composed of 30 percent glass fiber and 70 percent polyester resin. The glass fiber is high quality, commercial grade. The polyester resin is a premium grade, corrosion resistant isophthalic type resistant to soil borne chemicals as well as aircraft fuels, hydraulic oils, and deicing solutions. The shell interior is coated with a resin-rich gel cat having a white pigment to provide a bright clean environment and appearance.

COVER:

The pit cover is a two-piece, non-skid, non-sparking assembly consisting of a small stationary "hinge" cover and a large counterweighted main cover which can open to 90 degrees on weight bearing hinges. The main cover can be unlatched and opened with a single hand lift to expose a square 38 inch (965mm) clear opening. The unique operating mechanism, which is contained in the back extension, leaves the main body clear for service equipment located near the underside of the main cover. Each main cover is available with cast service identification in recessed lettering 2 inches (51mm) high by 1/16 inch (2mm) deep. The cover assembly is completely removable for maximum access to internal equipment. Each cover is manufactured from aluminum alloy provides high strength, excellent machinability, and ductility, very good shock and corrosion resistance, and uniform material properties throughout the casting.

LOAD RATING:

The covers are guaranteed to withstand a 200,000 (90,720kg) load applied over a 200 square inch (1290cm²) tire footprint area placed anywhere on them [1000 psi (70.3kg/cm²) ultimate load rating]. This represents a 4 to 1 safety factor.

QUALITY ASSURANCE:

All covers are proof load tested and evaluated in accordance with the United States Military standard MIL-STD-105, "Sampling Procedures and Tables for Inspection Attributes".

OPTIONS:

For special configurations, consult factory.

GNY PIT MODEL 7038WR

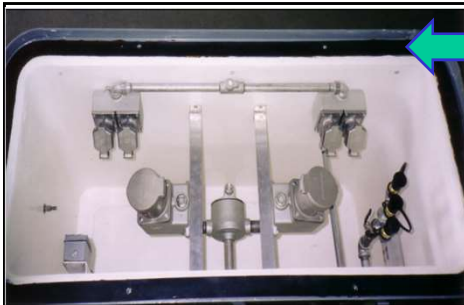
One on the First products designed by our engineers was **the first aluminum fuel hydrant pit cover, capable of withstanding aircraft wheel loads on the ramp.** Since that time in early 1950's, we have designed and manufactured thousands (10,000+) of steel and fiberglass ground service pits, in 22+ different model for fuel, water, preconditioned air, air, air start and electrical service to aircraft, which covers all requirement of Airports, Airlines, Military, Fueling Service Companies, Oil Companies and Corporates. Larger versions of the pits have been designed and installed for maintenance of isolation valves or for equipment vaults.

: GNY Model 7038 Under Proof Load Test:

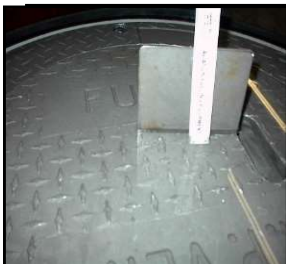
The cover assembly is under load test **guarantee** to withstand a single 200,000 pound (90720 kg) load applied over a 200 square inch (1290cm²) tire footprint area placed anywhere on it (1000psi (70.3kg/cm²) rating). **This represents a 4 to 1 safety factor.**



Special Water Resistant Feature:



Water Resistant Flat Gasket installed at all four sides of cover assy. covering 360 deg.



Water Resistant Testing with 2" of Water on Cover Assy.

