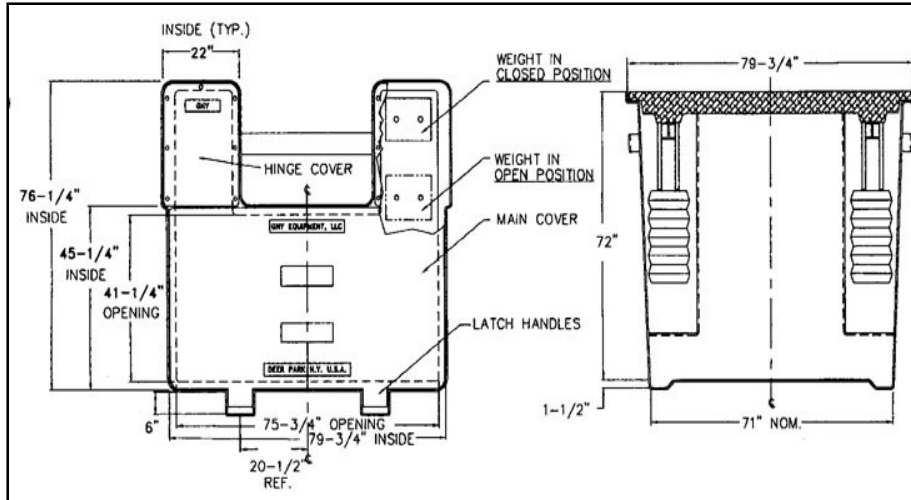


GNY AIRCRAFT GROUND SERVICE PIT

MODEL 8000WR Counter Weight Balanced

FOR AIRPORT APRON AND HANGER MAINTENANCE FACILITIES



The standard Model 8000 pit consists of a three-piece cast aluminum cover assembly and a one piece molded fiberglass shell. The shell entrance (s) can be located in bottom, sides or ends depending upon application. The main cover is hinged and counterweighted for ease of opening to expose a large rectangular opening.

APPLICATIONS:

FUEL HYDRANT

For all commercial and military aviation fuel hydrant valves, single or dual configuration.

ISOLATION

For pipeline isolation valves.

WATER SERVICE

For water hydrant outlets and/or water service.

ELECTRICAL

For 120 volt and 240 volt, 60 hertz and 400 hertz service and other various voltages and frequencies with or without transformers.

Special application for communication service.

SURGE SUPPRESSOR

For installation of surge suppressors.

MAINTENANCE & ACCESS

For access manways into underground vaults.

SPECIAL APPLICATIONS

Consult factory for custom application.

SHELL: The Model 8000 pit shell is a one-piece molded unit. The inside dimensions of the shell are 75.75 inches (1925mm) long by 41.25 inches (1050mm) wide and 72 inches (1830mm) deep. The shell wall is nominally one-half (.50) inch (12.7mm) thick and has ten (10) integral brackets for concrete anchors equally spaced around the outside perimeter of the shell below the cover seat. The pit shell is a glass fiber reinforced plastic (GRP) structure composed of 30 percent glass fiber and 70 percent polyester resin. The glass fiber is high quality, commercial grade. The polyester resin is a premium grade, corrosion resistant isophthalic type resistant to soil borne chemicals as well as aircraft fuels, hydraulic oils, and deicing solutions. The shell interior is coated with resin-rich gel coat having a white pigment to provide a bright, clean environment and appearance.

GNY MODEL 8000WR

Counter Weight Balanced

COVER:

The pit cover is a three-piece, non-skid, non-sparking assembly consisting of two small stationary “hinge” covers and a large main cover, which can open to 85 degrees on weight bearing hinges. The main cover can be opened with a 25 Lb. (11.4kg) single hand lift to expose a 75.75inch by 41.25 inch (1925mm by 1050mm) clear opening. An U.S. patent is pending for the unique operating mechanism. Each main cover is available with cast in service identification (one inch (25mm) high by .062 inch (1.5mm) raised letters). The cover assembly is completely removable for a maximum access to internal equipment. Each cover is manufactured from an aluminum-zinc alloy casting conforming to Federal Specification (USA) QQ-A-601F alloy 712.0 (formerly 40E). This alloy provides high strength, excellent machinability and ductility, very good shock and corrosion resistance, and uniform material properties throughout the casting.

INNER COVER SEAL: Fuel resistant “O” ring seal installed in a machined groove.

LOADING RATING:

The covers are guaranteed to withstand single or dual 200,000 pound (90720 kg) load each applied over a 200 square inch (1290cm²) tire footprint area placed anywhere on them (1000psi (70.3kg/cm²) rating). This represents a 4 to 1 safety factor.

QUALITY ASSURANCE:

All covers are proof loads tested and evaluated in accordance with the United States Military Standard MIL-STD-105, “Sampling Procedures and Tables for Inspection Attributes”.

OPTIONS:

OVER-ALL-DEPTH

Presently available optional depths 96, 108 and 120 inches (2440, 2745, and 3050mm). Other depths are available on special order.

SHELL PENETRATIONS

Liquid tight penetrations through shell walls or floor are available for piping, electrical conduit, etc.

FLANGED STEEL SUPPORT FRAME FOR COVER

Integrally bonded to the fiberglass shell.

CUSTOM SHELL

CONFIGURATIONS

Side entrance or extensions available on special order.

SPLIT TOP SHELL

A special slip-fit, removable top section is available to enable a continuous concrete apron Panel pour. The removable upper section is supplied with four (4) additional integral brackets for Concrete anchors. SHELL

BOTTOM

A solid, liquid tight, flat bottom is available.

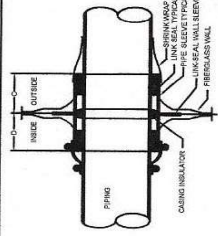
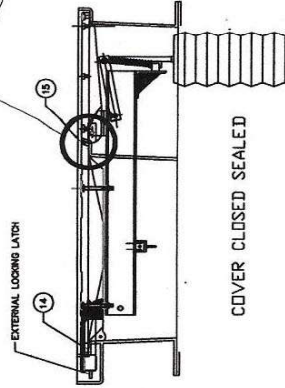


[illegible]

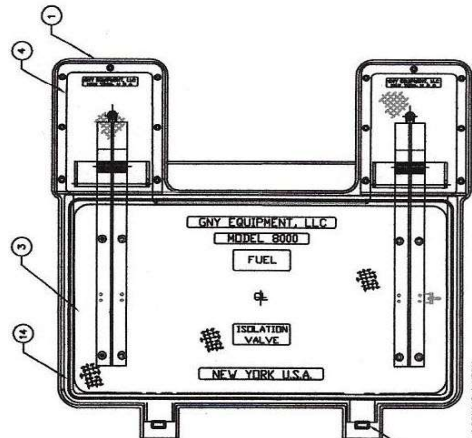
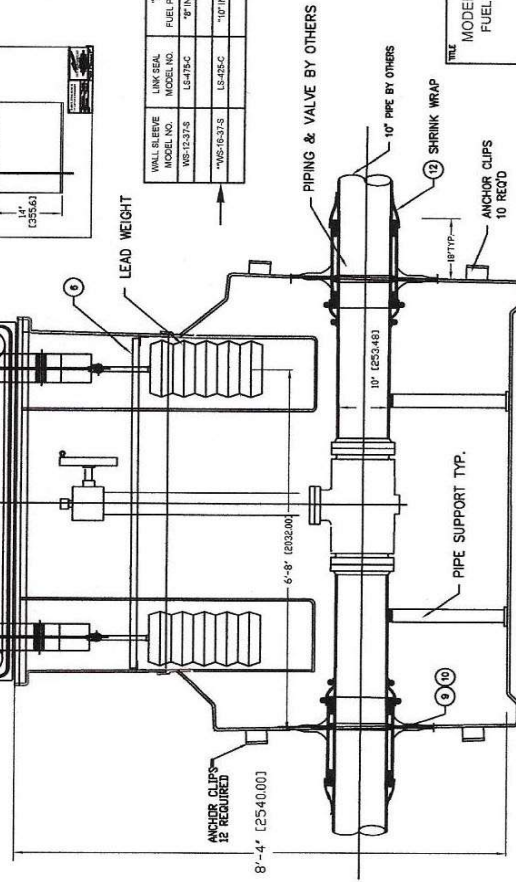
ITEM	BILL OF MATERIALS
1	1 1/2" Thk Fiberglass Shell
2	Counterweight Assembly
3	Model 8000 Cover Assy.
4	Counterweight Cover Assy
5	Safety Hold Open Bar Assy
6	Alum.Grating Assy 400lbs. rated
7	1 1/2" Stainless Grd Stud
8	LINK-SEALS FOR 12" PIPE-Y
9	Stainless Clamps
10	Buna-N Boot
11	2" Pump-Out w/ Brs Qk-Disconnect
12	Shrink Wrap
13	Misc. Materials (Brackets)
14	NEOPRENE RUBBER SEAL 3/8 D
15	HINGE SEAL

1. TOP OF MAIN AND HINGED COVERS ARE NON-SKID SURFACE CONSTRUCTION
2. ALL DIMENSIONS ARE INSIDE
3. GRATING NOT HINGED DUE TO WEIGHTS BEING IN BACK POCKETS.

1. TEST LOAD TO BE APPLIED ON 11.74 x 18.6
2. TIRE PRINT AREA = 200 SQ.IN. (SINGLE & DUAL)
3. RATED LOAD = 250 P.S.I.
3. TEST LOAD = 1000 P.S.I. (MIN.)
4. STATISTICAL TEST PER MIL-105



WALL & SLEEVE MODEL NO.	SEAL MODEL NO.	"A" FUEL PIPE DIA.	"B" SLEEVE PIP DIA.	"C" SLEEVE LENGTH OUTSIDE	"D" SLEEVE LENGTH INSIDE
WS-12-37-6	LS-74C	8" INCHES	12" INCHES	16" INCHES	4" INCHES
WS-16-37-6	LS-75C	10" INCHES	14" INCHES	16" INCHES	4" INCHES

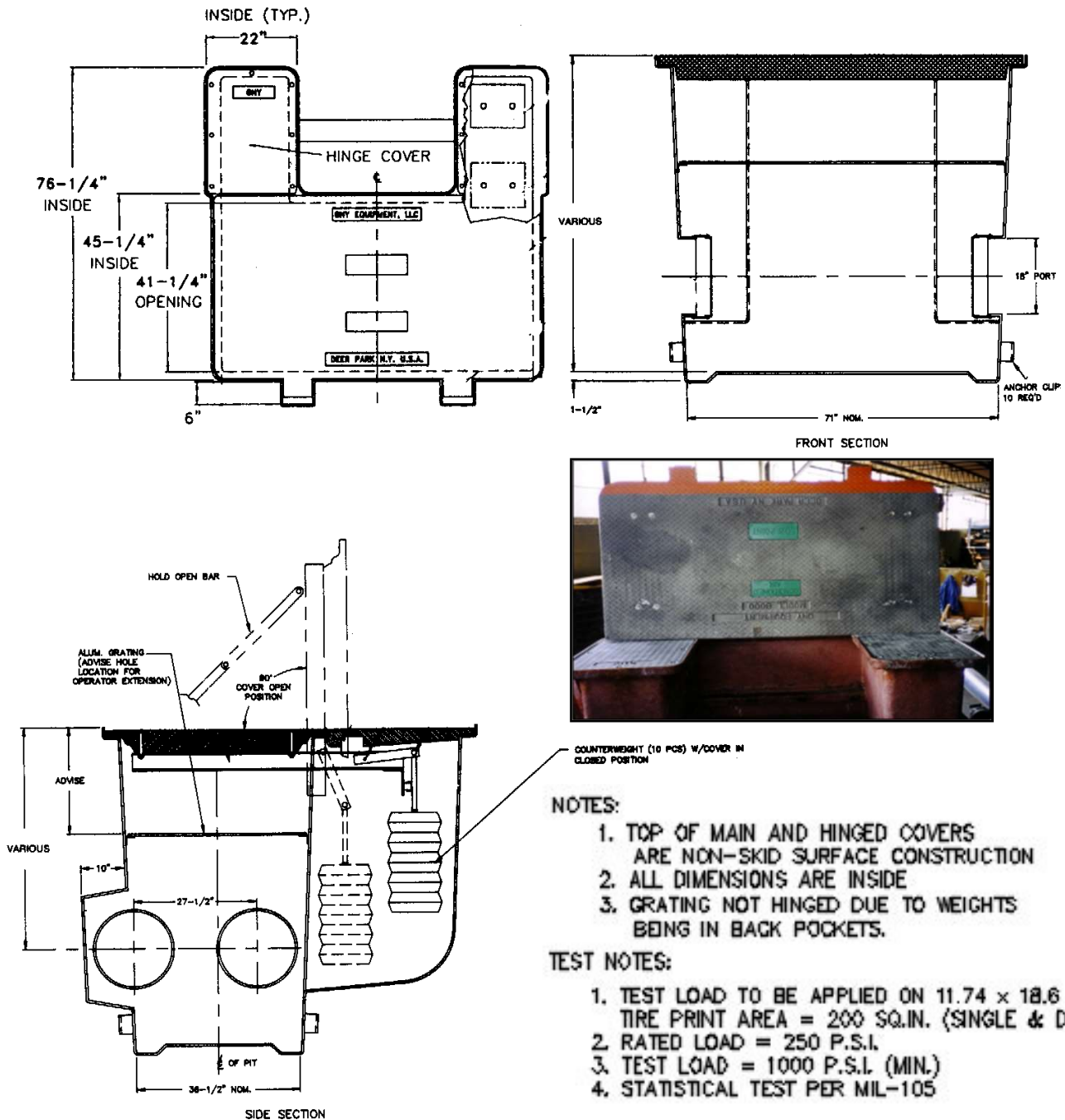


MODEL 8000WR100-1/P FUEL ISOLATION VALVE	DATE	
	DATE 03-05-18	DATE 03-05-18
DRAM BY M J C MLANEVA	DATE 03-05-18	
DECODED BY C F CREMER	DATE 03-05-18	

PROJECT:	REF:	DWG. #	REV.
	MS502-1	M80000P	

GNY MODEL 8000WR

Counter Weight Balanced



MODEL 8000

Title: FUEL ISOLATION VALVE PIT

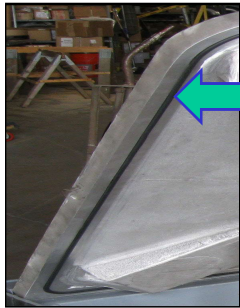
GNY MODEL 8000WR

Counter Weight Balanced

Special Features:



Water Resistant Hinge Seal Gasket Installed Between Back Hinged Fixed Covers and Main Counter Weight Opening Cover



Water Resistant O-Ring Seal Gasket Installed at Main Counter Weight Opening Cover

Water Resistant Testing for Model 8000WR 2" of water on Top Cover



GNY Model 8000 - Under Proof Load Test:

The cover assembly (part numbers 6533774 and 6533772(H)) is under load test guarantee to withstand a single 200,000 pound (90720 kg) load applied over a 200 square inch (1290cm²) tire footprint area placed anywhere on it (1000psi (70.3kg/cm²) rating). **This represents a 4 to 1 safety factor.**

