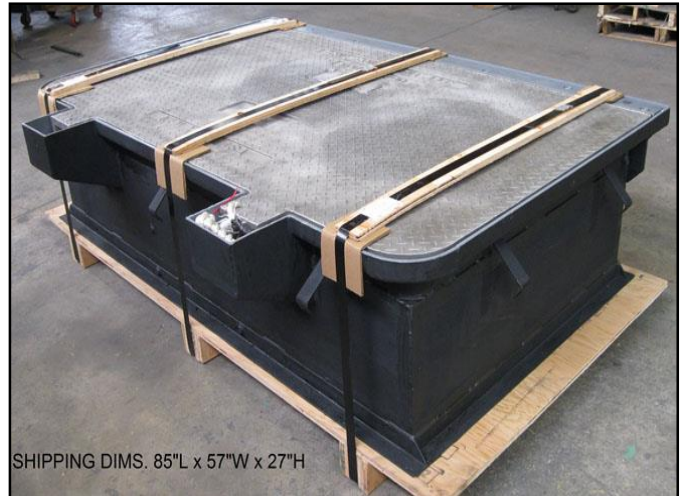
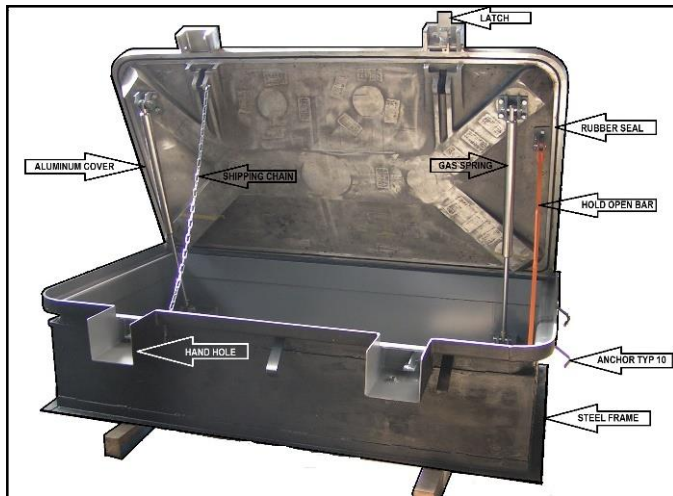


# GNY AIRCRAFT GROUND SERVICE PIT

## MODEL 8000WR Gas Spring Balanced

### FOR AIRPORT APRON AND HANGER MAINTENANCE FACILITIES



The standard Model 8000 pit consists of a One-Piece cast aluminum cover assembly and a one piece molded fiberglass shell. The shell entrance (s) can be located in bottom, sides or ends depending upon application. The main cover is hinged and counterweighted for ease of opening to expose a large rectangular opening.

#### APPLICATIONS:

FUEL HYDRANT

For all commercial and military aviation fuel hydrant valves, single or dual configuration.

ISOLATION

For pipeline isolation valves.

WATER SERVICE

For water hydrant outlets and/or water service.

ELECTRICAL

For 120 volt and 240 volt, 60 hertz and 400 hertz service and other various voltages and frequencies with or without transformers.

Special application for communication service.

SURGE SUPPRESSOR

For installation of surge suppressors.

MAINTENANCE & ACCESS

For access manways into underground vaults.

SPECIAL APPLICATIONS

Consult factory for custom application.

**SHELL:** The Model 8000 pit shell is a one-piece molded unit. The inside dimensions of the shell are **75.75 inches (1925mm) long by 41.25 inches (1050mm) wide and 72 inches (1830mm) deep.** The shell wall is nominally one-half (.50) inch (12.7mm) thick and has ten (10) integral brackets for concrete anchors equally spaced around the outside perimeter of the shell below the cover seat. The pit shell is a glass fiber reinforced plastic (GRP) structure composed of 30 percent glass fiber and 70 percent polyester resin. The glass fiber is high quality, commercial grade. The polyester resin is a premium grade, corrosion resistant isophthallic type resistant to soil borne chemicals as well as aircraft fuels, hydraulic oils, and deicing solutions. The shell interior is coated with resin-rich gel coat having a white pigment to provide a bright, clean environment and appearance. Optional Steel Frame Built-In with Fiber Glass is available.

# GNY MODEL 8000WR

## Gas Spring Balanced

### COVER:

The pit cover is a One-piece, non-skid, non-sparking assembly consisting of a large main cover, which can open to 90 degrees on weight bearing hinges. The main cover can be opened with a 25 Lb. (11.4kg) single hand lift to expose a 75.75inch by 41.25 inch (1925mm by 1050mm) clear opening. Each main cover is available with cast in service identification (one inch (25mm) high by .062 inch (1.5mm) raised letters). The cover assembly is completely removable for a maximum access to internal equipment. Each cover is manufactured from an aluminum-zinc alloy casting conforming to Federal Specification (USA) QQ-A-601F alloy 712.0 (formerly 40E). This alloy provides high strength, excellent machinability and ductility, very good shock and corrosion resistance, and uniform material properties throughout the casting.

COVER SEAL: Fuel resistant “O” ring seal installed in a machined groove.

### LOADING RATING:

The covers are guaranteed to withstand single or dual 200,000 pound (90720 kg) load each applied over a 200 square inch (1290cm<sup>2</sup>) tire footprint area placed anywhere on them (1000psi (70.3kg/cm<sup>2</sup>) rating). This represents a 4 to 1 safety factor.

### QUALITY ASSURANCE:

All covers are proof loads tested and evaluated in accordance with the United States Military Standard MIL-STD-105, “Sampling Procedures and Tables for Inspection Attributes”.

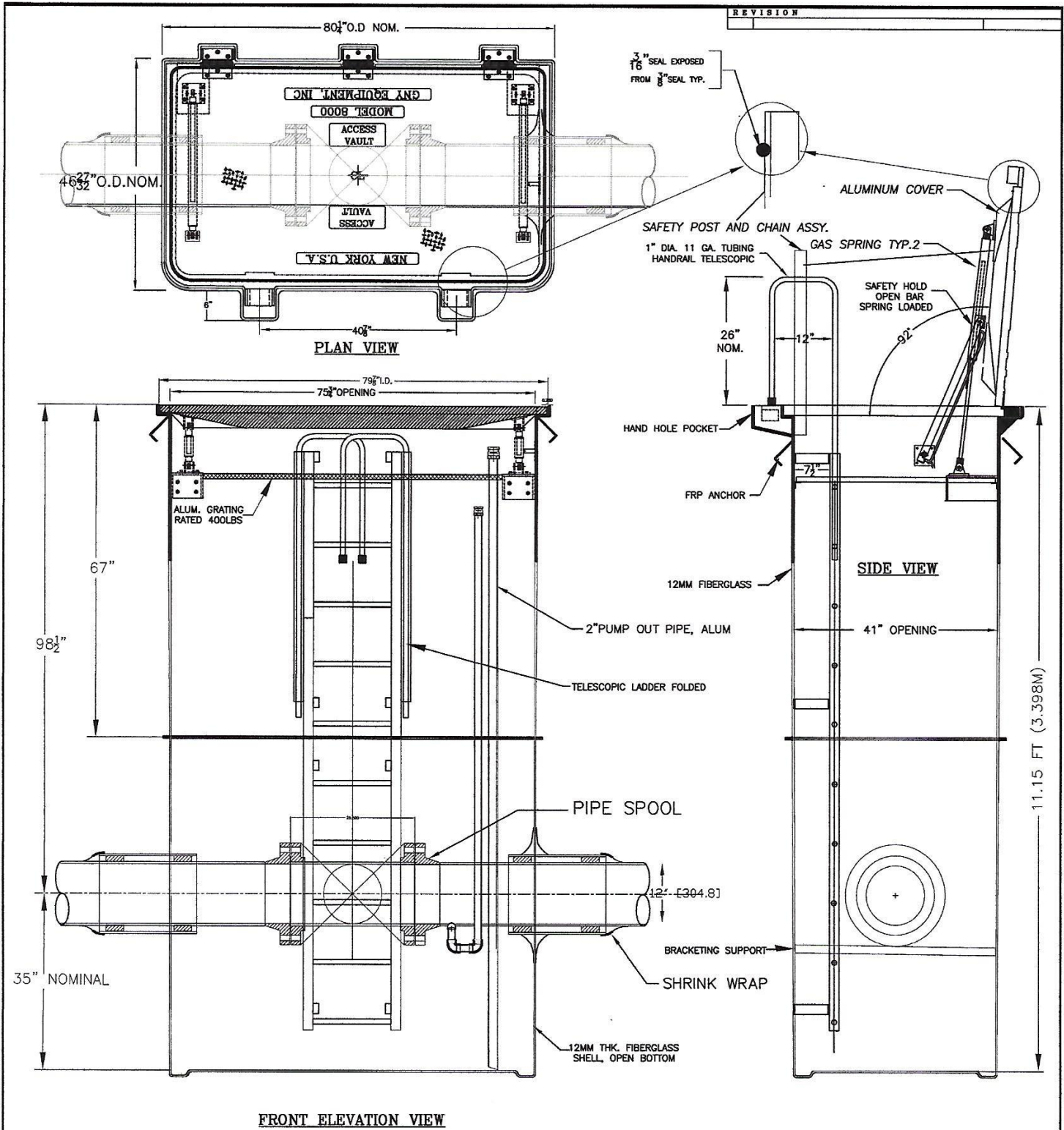
### OPTIONS:

OVER-ALL-DEPTH	Presently available optional depths 96, 108 and 120 inches (2440, 2745, and 3050mm). Other depths are available on special order.
SHELL PENETRATIONS	Liquid tight penetrations through shell walls or floor are available for piping, electrical conduit, etc.
FLANGED STEEL SUPPORT FRAME FOR COVER	Integrally bonded to the fiberglass shell.
CUSTOM SHELL CONFIGURATIONS	Side entrance or extensions available on special order.
SPLIT TOP SHELL	A special slip-fit, removable top section is available to enable a continuous concrete apron Panel pour. The removable upper section is supplied with four (4) additional integral brackets for Concrete anchors.
SHELL BOTTOM	A solid, liquid tight, flat bottom is available.




# GNY MODEL 8000WR

## Gas Spring Balanced



1. TOP OF MAIN & HINGED COVERS ARE NON SKID SURFACE CONSTRUCTION.
2. COVERS ARE 712 CAST ALUM. CONFORMING TO QQ-A-801P.
3. COVERS ARE RATED FOR AIRCRAFT WHEEL LOADS.

- NOTES:
1. TEST LOAD TO BE APPLIED ON 11.74 x 18.6 TIRE PRINT AREA = 200 SQ. IN.
  2. RATED LOAD = 250 P.S.I.
  3. PROOF LOAD = 500 P.S.I.
  4. ULTIMATE LOAD = 1000 P.S.I.
  5. STATISTICAL TEST PER MIL-STD-105

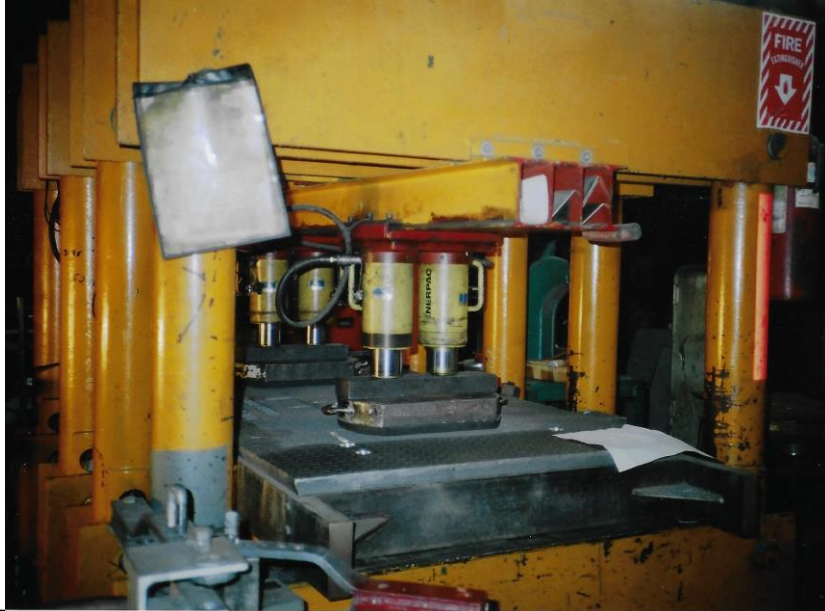
<b>TITLE</b> MODEL 8000WR12-IV ISOLATION VALVE SVC PIT 41" x 75-3/4" OPENING		 <b>GNY EQUIPMENT, INC.</b> 20 Orinall Drive Bay Shore, New York 11706 Telephone (631) 273-4040 Fax (631) 273-0018 E-Mail gnyeq@gnyequipment.com www.gnyequipment.com
DRAWN BY M G VILLANUEVA	DATE 08-02-17	
CHECKED BY C F CREAMER	DATE 08-02-17	SCALE SHEET: 1-1 OF 3 DWG. #: GNY8000WR12-IVA REV. A

# GNY MODEL 8000WR

## Gas Spring Balanced

### GNY Model 8000 - Under Proof Load Test:

The cover assembly (part number 6533804) is under load test guaranteed to withstand a single 200,000 pound (90720 kg) load applied over a 200 square inch (1290cm<sup>2</sup>) tire footprint area placed anywhere on it (1000psi (70.3kg/cm<sup>2</sup>) rating). **This represents a 4 to 1 safety factor.**



### Special Features:



Water Resistant O-Ring Seal Gasket  
Installed at Covering all sides

### Water Resistant Testing for 2" Water on Top Cover

