

GNY AIRCRAFT GROUND SERVICE PIT

MODEL 9000 Counter-Weight Balanced

FOR AIRPORT APRON AND HANGER MAINTENANCE FACILITIES



The standard Model 9000 pit consists of a three-piece cast aluminum cover assembly & a one-piece molded fiberglass shell. The shell entrance(s) can be located at the bottom, on the sides and/or even at the ends, depending on the application. The main pit cover is hinged and counter-weighted for ease of opening to expose a large rectangular opening.

APPLICATIONS:

FUEL HYDRANT

For all commercial and military aviation fuel hydrant valves, single or dual configuration

ISOLATION

For pipeline isolation valves.

WATER SERVICES

For water hydrant outlets and/or water service.

ELECTRICAL

For 120V & 240V, 60Hz & 400Hz services and other various voltages and frequencies with/without transformers. Special application for communication services.

SURGE SUPPRESSORS

For installation of surge suppressors.

MAINTENANCE AND ACCESS

For access manways into underground vaults.

SPECIAL APPLICATIONS

Consult factory for custom applications.

SHELL:

The Model 9000 pit shell is a one-piece molded unit. The inside dimensions of the expanded main body are 61 inches (1549mm) long by 41 inches (1041mm) wide and 72 inches (1830mm) deep. The shell wall is nominally one-half (.50) inch (12.7mm) thick and has ten (10) integral brackets for concrete anchors equally spaced around the outside perimeter of the shell below the cover seat. The pit shell is a glass fiber reinforced plastic (GRP) structure composed of 30% glass fiber and 70% polyester resin. The glass fiber is high quality, commercial grade. The polyester resin is a premium grade, corrosion resistant isophthalic type resistant to soil borne chemicals as well as aircraft fuels, hydraulic oils, and deicing solutions. The shell interior is coated with resin-rich gel coat having a white pigment to provide a bright, clean environment and appearance.

GNY MODEL 9000

Counter-Weight Balanced

COVER:

The pit cover is a three-piece, non-skid, non-sparking assembly consisting of two small stationary “hinge” covers and a large main cover, which can open to 85 degrees on weight bearing hinges. The main cover can be opened with a single hand lift to expose 61inch by 25.5inch (1550mm by 648mm) clear opening. The unique operating mechanism which is contained in the back extensions leave the main body clear so that piping can be run through the pit from end to end as well as from front to back at shallow depths without any interference from the weighted arms. Each main cover is available with cast in service identification (one inch (25mm) high by .062 inch (1.5mm) raised letters). The cover assembly is completely removable for a maximum access to internal equipment. Each cover is manufactured from an aluminum-zinc alloy casting conforming to Federal Specification (USA) QQ-A-601F alloy 712.0 (formerly 40E). This alloy provides high strength, excellent machinability and ductility, very good shock and corrosion resistance, and uniform material properties throughout the casting.

LOADING RATING:

The covers are guaranteed to withstand single or dual 200,000 pound (90720 kg) loads each applied over a 200 square inch (1290cm²) tire footprint area placed anywhere on them (1000psi (70.3kg/cm²) rating). This represents a 4 to 1 safety factor.

QUALITY ASSURANCE:

All covers are proof loads tested and evaluated in accordance with the United States Military Standard MIL-STD-105, “Sampling Procedures and Tables for Inspection Attributes”.

OPTIONS:

OVER-ALL DEPTH

Presently available depth options of 96, 108 and 120 inches (2440, 2745 and 3050mm). Other depths available on special order.

SHELL PENETRATIONS

Liquid-tight penetrations through shell walls or floor are available for piping, electrical conduits, etc.

SPECIAL CONFIGURATIONS

Consult factory.



GNY AIRCRAFT GROUND SERVICE PIT TESTING OF PITS FOR LOAD-BEARING

FOR AIRPORT APRON AND HANGER MAINTENANCE FACILITIES

One of the first products designed by our engineers was **the first aluminum fuel hydrant pit cover, capable of withstanding aircraft wheel loads on the ramp.** Since that time in early 1950's, we have designed and manufactured thousands (10,000+) of steel and fiberglass ground service pits, in 22+ different models for fuel, water, preconditioned air, air, air-start and electrical services to aircraft. This covers all requirements of Airports, Airlines, Military, Fueling Service Companies, Oil Companies and Corporates. Larger versions of the pits have been designed and installed for maintenance of isolation valves or for equipment vaults.

GNY Models Proof Load Test

The cover assembly is load-tested and **guaranteed** to withstand a single 200,000-pound (90720 kg) load applied over a 200 square inch (1290cm²) tire footprint area placed anywhere on it (1000psi (70.3kg/cm²) rating). **This represents a 4 to 1 safety factor.**

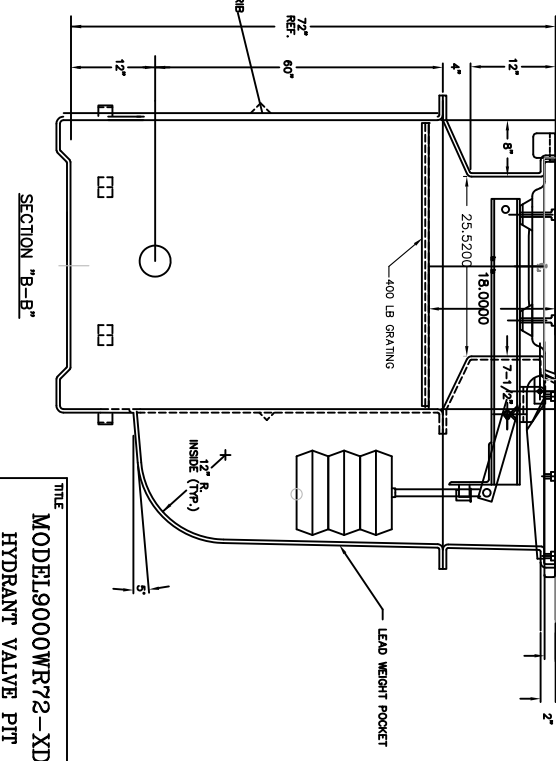
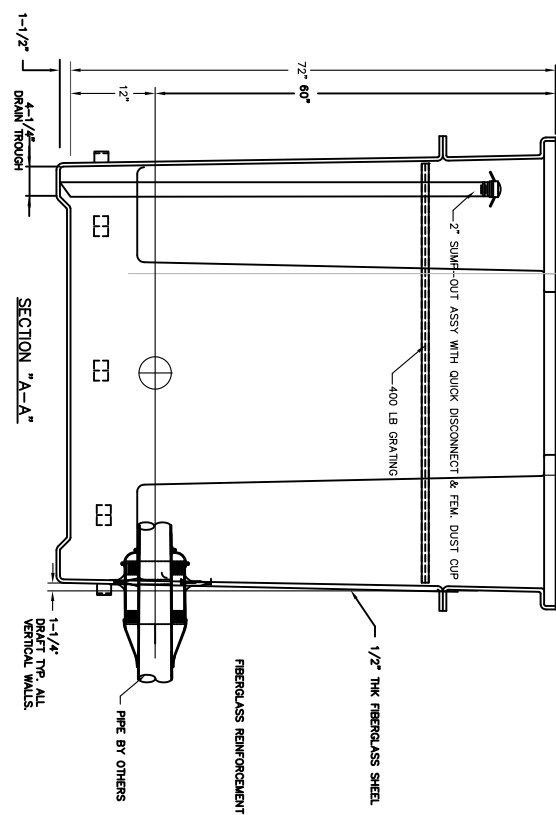
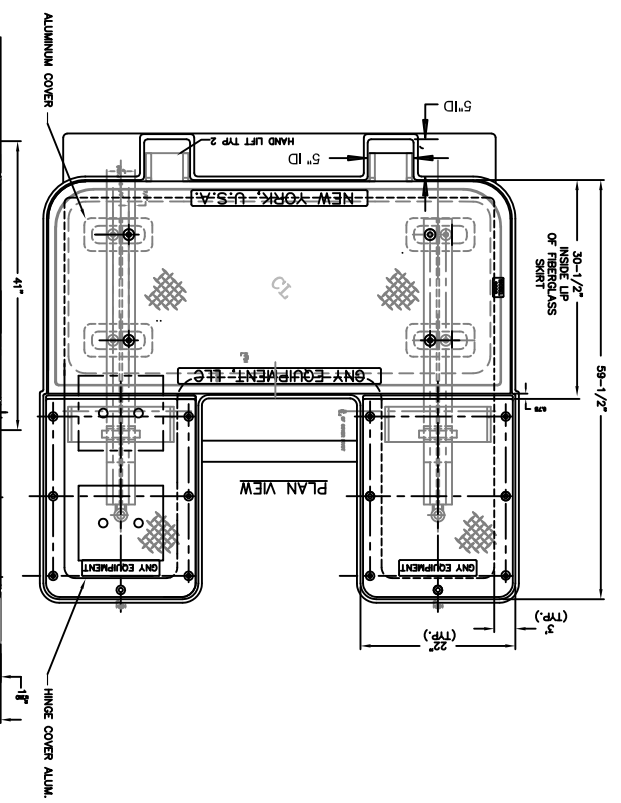
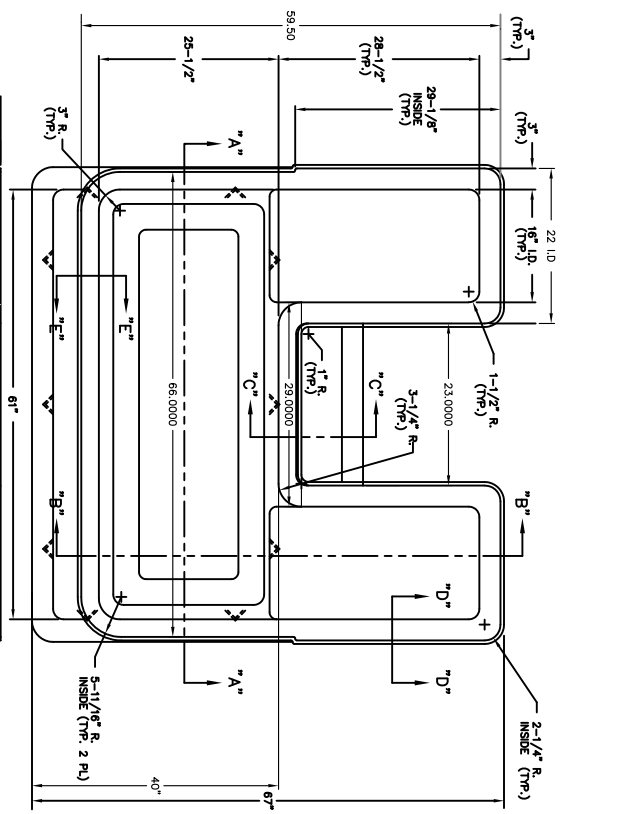


Testing: GNY Model 1463DH - Under Proof Load Test:



The cover assembly (part numbers 6533774 and 6533772(H)) is under load test guarantee to withstand a single 200,000 pound (90720 kg) load applied over a 200 square inch (1290cm²) tire footprint area placed anywhere on it (1000psi (70.3kg/cm²) rating). **This represents a 4 to 1 safety factor.**



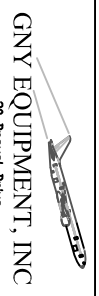


TITLE
MODEL9000WR72-XD
HYDRANT VALVE PIT

DRAWN BY
M G VILANDUEVA
 DATE
05-17-19

CHECKED BY
C F CREAMER
 DATE
05-17-19

APPROVED BY
KADINA APB
 DATE



GNY EQUIPMENT, INC
 20 Drexel Drive
 Bay Shore, New York 11706
 Telephone (631) 673-4940 Fax (631) 673-5818
 E-mail gnyequipment@comcast.net
 www.gnyequipment.com

SCALE
NONE
 DWG. #
GNY653948WR-08
 REV.
D