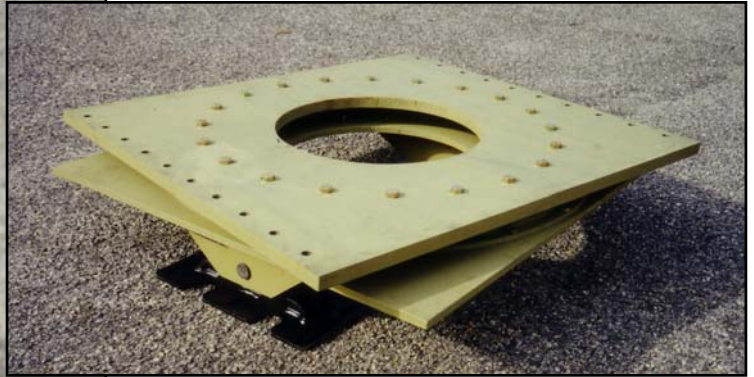


GNY LIQUID FIFTH WHEELS

Model 9688

Dual Concentric Liquid Fifth Wheel



Plates for Dual Fifth Wheels

Description:

The GNY "Liquid Fifth Wheel" is a composite, fabricated steel, upper and lower Fifth Wheel Assembly integrally joined through a hi-tensile steel ring bearing. An unobstructed circular opening through the center of the entire assembly allows the passage of product piping through the unit.

Application:

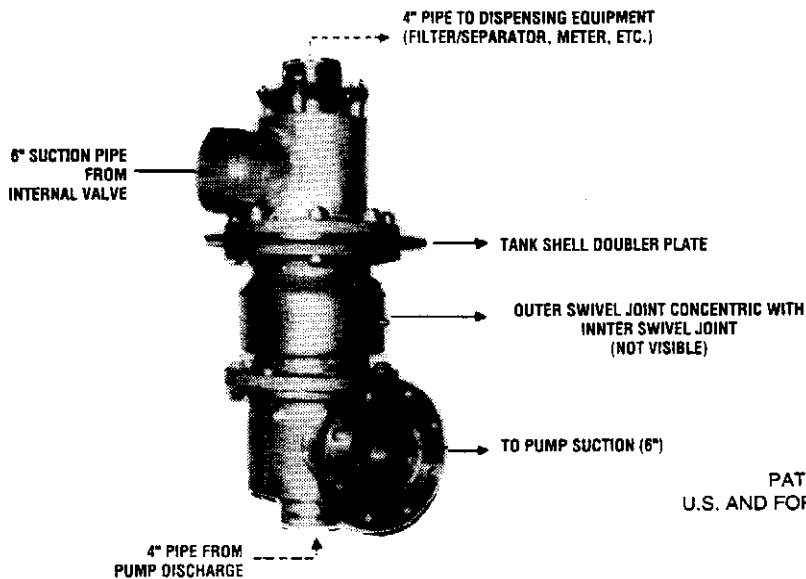
It can be used to join motor vehicle tractors and tank type semi-trailers, in-lieu of the conventional type Fifth Wheel/King Pin connection.

Dual Swivel Assembly

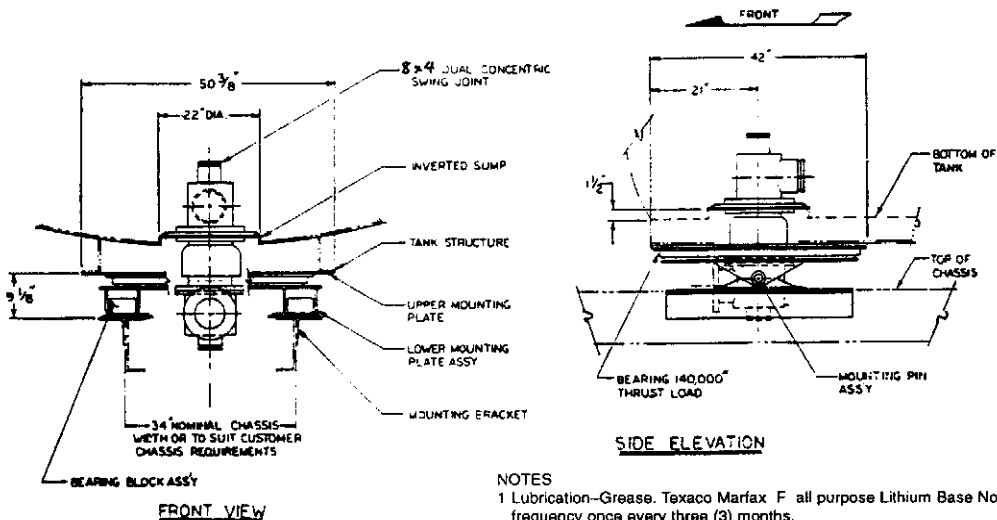
DUAL CONCENTRIC LIQUID FIFTH WHEEL MODEL NO. 9688

LIQUID SUCTION AND DISCHARGE CONNECTION FROM SEMI-TRAILER TO TRACTOR.
FOR JET FUEL AND OTHER LIQUID PRODUCTS.
TRACTOR ENGINE DRIVES PRODUCT PUMP VIA POWER-TAKE-OFF ON TRANSMISSION
OR INLINE SPLIT-SHAFT PUMP.
ADAPTABLE TO ALL SIZES OF SEMI-TRAILERS AND REFUELERS.
ECONOMICAL - RELIABLE - SAFE.

DUAL CONCENTRIC SWING JOINT, ALUMINUM THE HEART OF THE FIFTH WHEEL



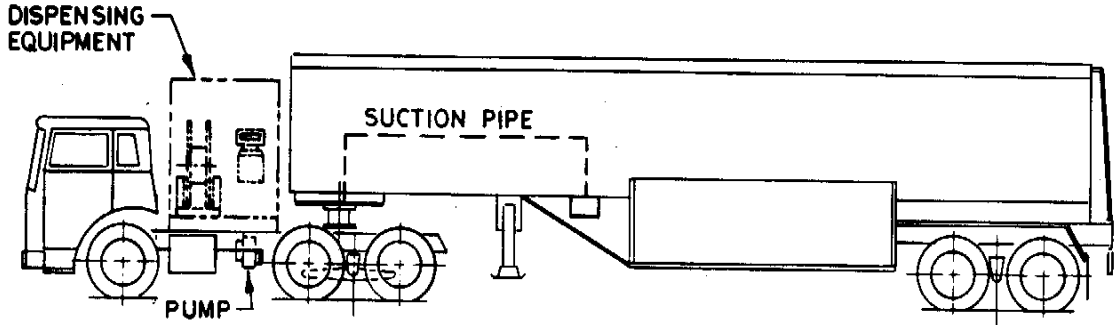
PATENTED IN
U.S. AND FOREIGN COUNTRIES



NOTES

- 1 Lubrication-Grease. Texaco Marfax F all purpose Lithium Base No. 2 Grade. frequency once every three (3) months.
- 2 Separation of tractor & trailer is accomplished by removal of two (2) securing pins from upper & lower bearing blocks.
- 3 The Liquid Fifth Wheel can be customized to meet customers specific load and dimensional requirement.
- 4 All fasteners shall be 5/8" grade 8.

SINGLE LIQUID FIFTH WHEEL MODEL NO. 887



DESCRIPTION

The Garsite "Liquid Fifth Wheel" is a composite, fabricated steel, upper and lower Fifth Wheel Assembly integrally joined through a hi-tensile steel ring bearing. An unobstructed circular opening through the center of the entire assembly allows the passage of product piping through the Unit.

APPLICATION

It can be used to join motor vehicle tractors and tank type semi-trailers, in lieu of the conventional type Fifth Wheel/King Pin connection. It has the dual function of joining tractor and trailer together and allowing the direct transmission of liquids, through the center of the Liquid Fifth Wheel, from the semi-tank trailer to a pump on the motor vehicle tractor.

DESIGN

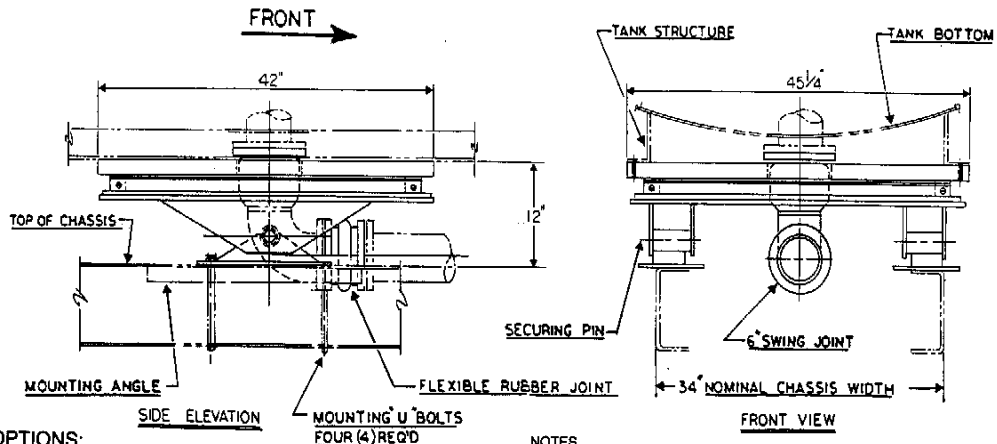
The Liquid Fifth Wheel consists of:

- (1) Steel upper mounting plate which can be secured to the underside of the front of the semi-tank trailer.
- (2) High Strength Alloy Steel, ball type, ring bearing with the inner bearing race secured to the Upper Mounting Plate.
- (3) Steel Lower Mounting Plate—secured to the Outer Bearing Race.
- (4) Structural steel sub-frame welded to the Lower Mounting Plate.

- (5) Two steel support bearings with integral grease retainer - welded to Structural Steel Sub-Frame.
- (6) Two lower bearing brackets with synthetic rubber shock bushings and securing pins. The lower bearing brackets are mounted on the frame rails of the motor vehicle tractor.
- (7) A liquid tight rotating swing joint which can be mounted on the underside of the front of the semi-tank trailer in the center of the Liquid Fifth Wheel ring bearing. Standard swing joint is steel 6" - 150 lb. ANSI flanged.

DESIGN ADVANTAGES

- (1) Allows direct transmission of liquids from tank to product pump on tractor.
- (2) Obviates necessity for overhead jumper hoses or trailer nose connections.
- (3) Minimizes pump suction problems and extends pump life.
- (4) Complete Liquid Fifth Wheel Assembly, with the exception of lower bearing brackets, remains affixed to the underside of the front of the semi-tank trailer, as a unitized package.
- (5) Separation of tractor and trailer is accomplished simply, by removal of two securing pins from upper support bearings and lower bearing brackets. Does not require special tools or accessories.
- (6) Permits use of PTO driven pump on tractor without using hydraulic drive systems, flexible or removable pump drives.



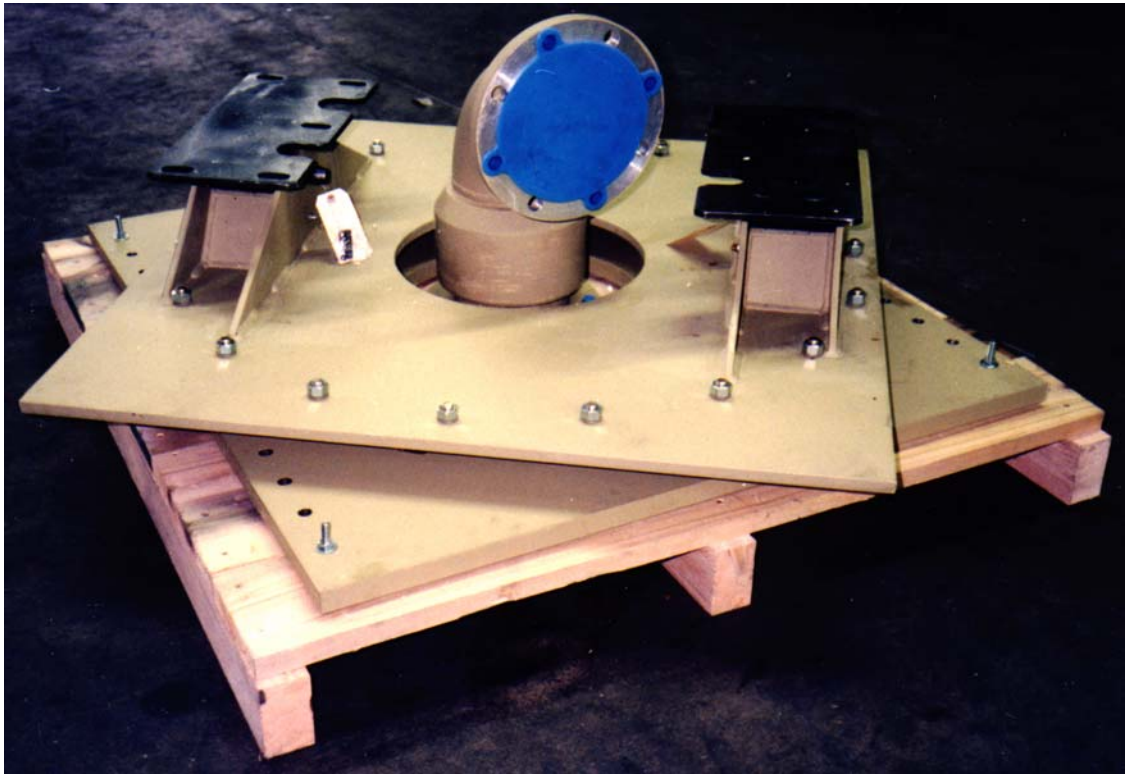
OPTIONS:

- a.) Aluminum swing joint
 - b.) Stainless steel swing joint
 - c.) Flanged inlet with thread (FNPT) outlet
- Applicable for steel, aluminum and stainless steel swing joints.

NOTES

1. Lubrication—Grease, Texaco Marflex Full Purpose Lithium Base No. 2 Grade, frequency once every three (3) months.
2. Separation of tractor & trailer is accomplished by removal of two (2) securing pins from upper & lower bearing blocks.
3. The liquid fifth wheel can be customized to meet customers specific load and dimensional requirement.
4. All fasteners shall be 5/8" grade 8.

GNY LIQUID FIFTH WHEELS



Model 887 (Single Fifth Wheel)

Description:

The GNY "Liquid Fifth Wheel" is a composite, fabricated steel, upper and lower Fifth Wheel Assembly integrally joined through a hi-tensile steel ring bearing. An unobstructed circular opening through the center of the entire assembly allows the passage of product piping through the unit.

Application:

It can be used to join motor vehicle tractors and tank type semi-trailers, in-lieu of the conventional type Fifth Wheel/King Pin connection.

Design Advantages:

- Allows direct transmission of liquids from tank to product pump on tractor.
- Obviates necessity for overhead jumper hoses or trailer nose connections.
- Minimizes pump suction problems and extends pump life.
- Complete Liquid Fifth Wheel assembly, with the exception of lower bearing brackets, remains affixed to the underside of the front of the semi-tank trailer, as a utilized package.
- Separation of tractor and trailer is accomplished by removal of two securing pins from upper support bearings and lower bearing brackets and disconnection of product piping. This operation does not require special tools or accessories.
- Permits the use of PTO driven pump on tractor without using hydraulic drive systems, flexible or removable pump drives.